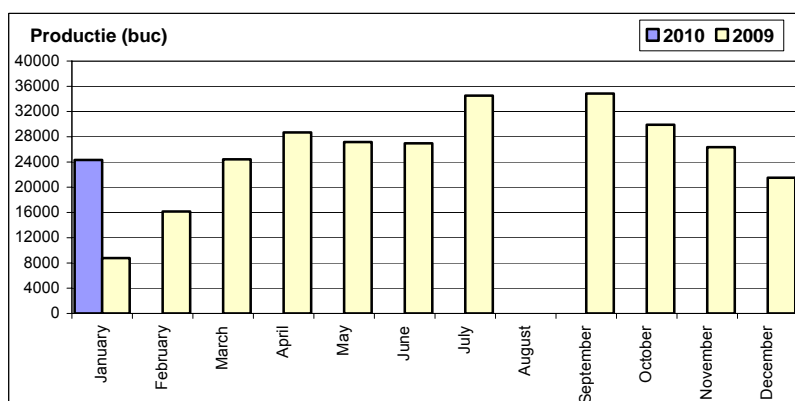


Productie autoturisme

Luna/An	2010	2009	Variatie
January	24 335	8 775	177.3%
February	-	16 161	-
March	-	24 422	-
April	-	28 691	-
May	-	27 171	-
June	-	26 967	-
July	-	34 517	-
August	-	0	-
September	-	34 841	-
October	-	29 916	-
November	-	26 346	-
December	-	21 513	-
Total	24 335	8 775	177.3%

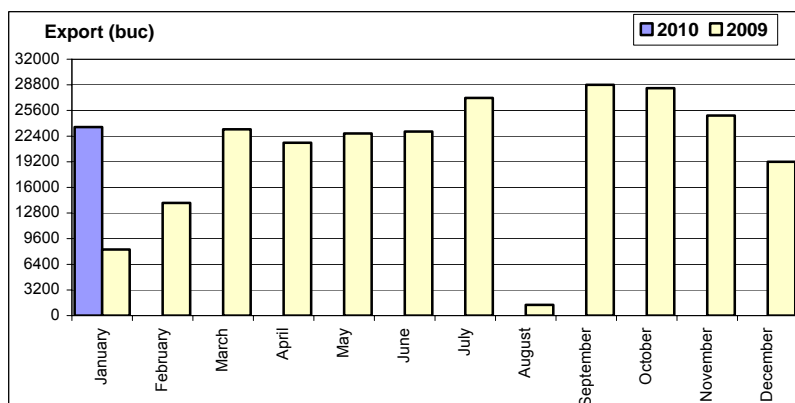
279 320



Export autoturisme

Luna/An	2010	2009	Variatie
January	23 522	8 242	185.4%
February	-	14 072	-
March	-	23 241	-
April	-	21 578	-
May	-	22 727	-
June	-	22 975	-
July	-	27 167	-
August	-	1 334	-
September	-	28 808	-
October	-	28 393	-
November	-	24 961	-
December	-	19 190	-
Total	23 522	8 242	185.4%

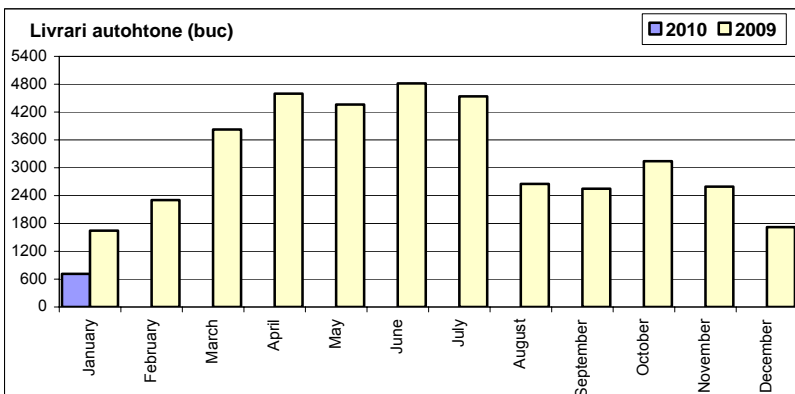
242 688



Livrari autoturisme autohtone

Luna/An	2010	2009	Variatie
January	715	1 645	-56.5%
February	-	2 302	-
March	-	3 823	-
April	-	4 595	-
May	-	4 361	-
June	-	4 816	-
July	-	4 538	-
August	-	2 653	-
September	-	2 550	-
October	-	3 141	-
November	-	2 592	-
December	-	1 720	-
Total	715	1 645	-56.5%

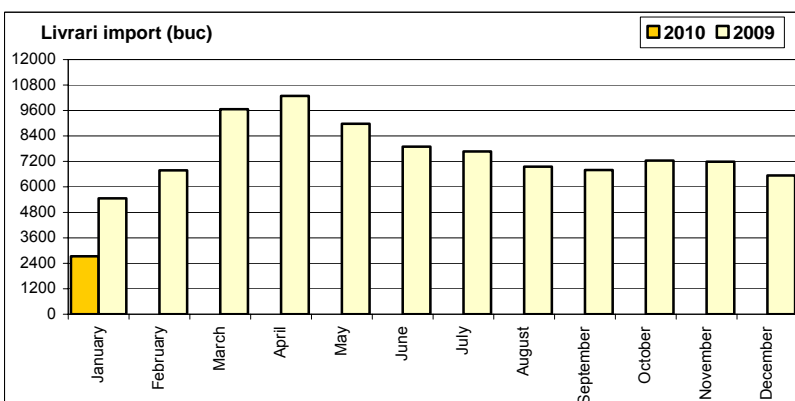
38 736



Livrari autoturisme import

Luna/An	2010	2009	Variatie
January	2 728	5 463	-50.1%
February	-	6 780	-
March	-	9 661	-
April	-	10 289	-
May	-	8 975	-
June	-	7 900	-
July	-	7 673	-
August	-	6 954	-
September	-	6 792	-
October	-	7 239	-
November	-	7 189	-
December	-	6 542	-
Total	2 728	5 463	-50.1%

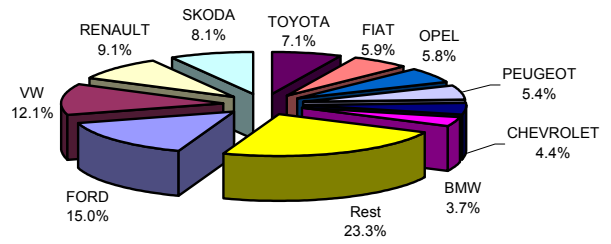
91 457



Top livrari autoturisme import - marci

	Ianuarie 2010			Ianuarie 2009			Variatie procent
	pozitie	unitati	pondere	pozitie	unitati		
FORD	1	408	15.0%	5	322	↗	26.7%
VOLKSWAGEN	2	330	12.1%	1	918	↘	-64.1%
RENAULT	3	249	9.1%	2	570	↘	-56.3%
SKODA	4	222	8.1%	3	546	↘	-59.3%
TOYOTA	5	194	7.1%	10	151	↗	28.5%
FIAT	6	160	5.9%	7	260	↘	-38.5%
OPEL	7	159	5.8%	6	299	↘	-46.8%
PEUGEOT	8	148	5.4%	4	355	↘	-58.3%
CHEVROLET	9	120	4.4%	9	154	↘	-22.1%
BMW	10	102	3.7%	18	65	↗	56.9%
Rest		636	23.3%		1823		-65.1%
TOTAL		2728	100.0%		5463		-50.1%

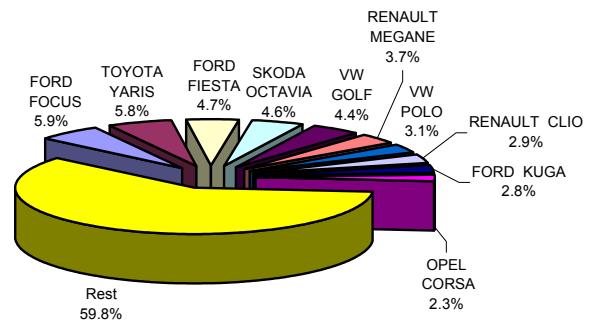
Autoturisme import - marci - ianuarie 2010



Top livrari autoturisme import - modele

MARCA	Ianuarie 2010			Ianuarie 2009			Variatie procent
	pozitie	unitati	pondere	pozitie	unitati		
FORD FOCUS	1	161	5.9%	5	191	↘	-15.7%
TOYOTA YARIS	2	159	5.8%	50	22	↗	622.7%
FORD FIESTA	3	128	4.7%	51	22	↗	481.8%
SKODA OCTAVIA	4	126	4.6%	2	250	↘	-49.6%
VOLKSWAGEN GOLF	5	120	4.4%	7	171	↘	-29.8%
RENAULT MEGANE	6	101	3.7%	3	249	↘	-59.4%
VOLKSWAGEN POLO	7	84	3.1%	12	129	↘	-34.9%
RENAULT CLIO	8	80	2.9%	1	261	↘	-69.3%
FORD KUGA	9	76	2.8%	85	9	↗	744.4%
OPEL CORSA	10	63	2.3%	16	88	↘	-28.4%
Rest		1630	59.8%		4071		-60.0%
TOTAL		2728	100.0%		5463		-50.1%

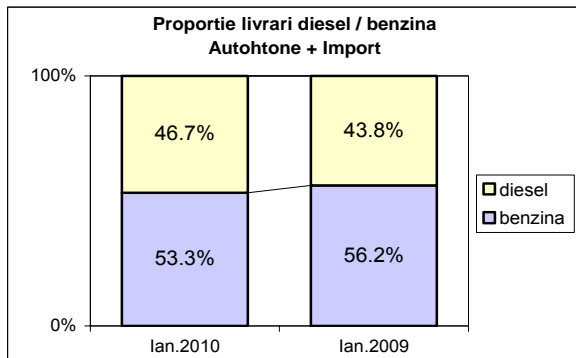
Autoturisme import - modele - ianuarie 2010



Livrari autoturisme DIESEL

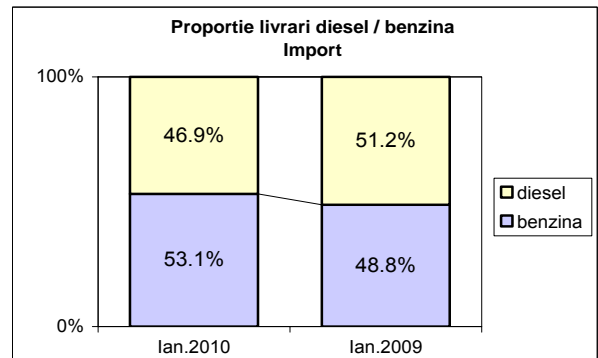
Autohtone + Import

	benzina		diesel		total
Ian.2010	1 806	53.3%	1584	46.7%	3 390
Ian.2009	3 637	56.2%	2832	43.8%	6 469



Import

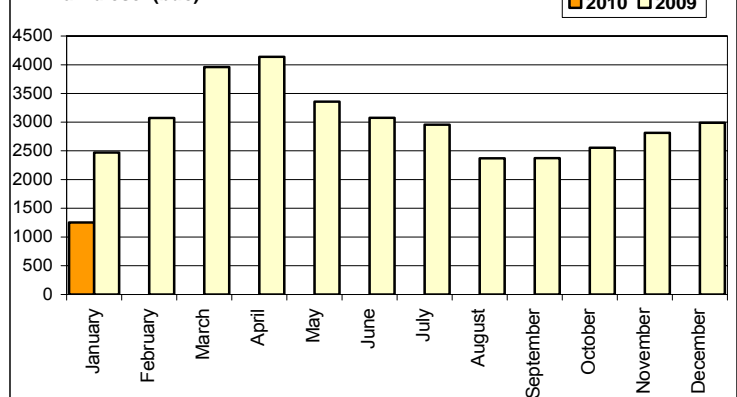
	benzina		diesel		total
Ian.2010	1 421	53.1%	1254	46.9%	2 675
Ian.2009	2 352	48.8%	2472	51.2%	4 824



Livrari autoturisme DIESEL - import

Luna/An	2010	pondere diesel	2009	pondere diesel	Variatie 10/09
January	1 254	46.9%	2 472	51.2%	-49.3%
February	-	-	3 072	45.3%	-
March	-	-	3 958	41.0%	-
April	-	-	4 139	40.2%	-
May	-	-	3 356	37.4%	-
June	-	-	3 076	38.9%	-
July	-	-	2 956	38.5%	-
August	-	-	2 368	34.1%	-
September	-	-	2 374	35.0%	-
October	-	-	2 555	35.3%	-
November	-	-	2 813	39.1%	-
December	-	-	2 988	45.7%	-
Total	1 254	46.9%	2 472	51.2%	-49.3%

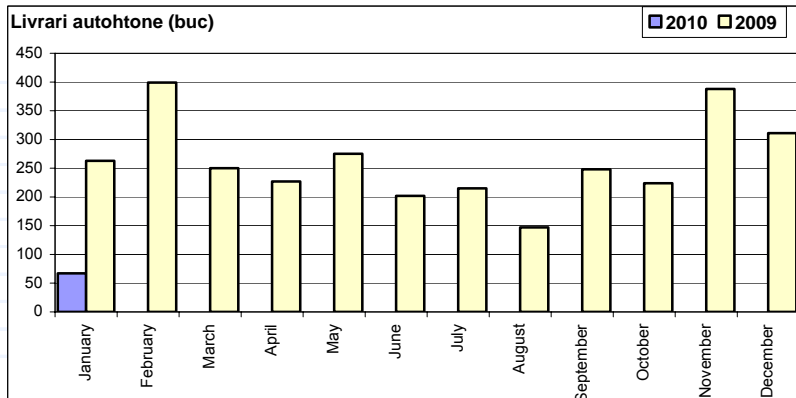
Livrari diesel (buc)



Livrari comerciale usoare + minibus autohtone

Luna/An	2010	2009	Variatie
January	67	263	-
February	-	399	-
March	-	250	-
April	-	227	-
May	-	275	-
June	-	202	-
July	-	215	-
August	-	147	-
September	-	248	-
October	-	224	-
November	-	388	-
December	-	311	-
Total	67	263	-74.5%

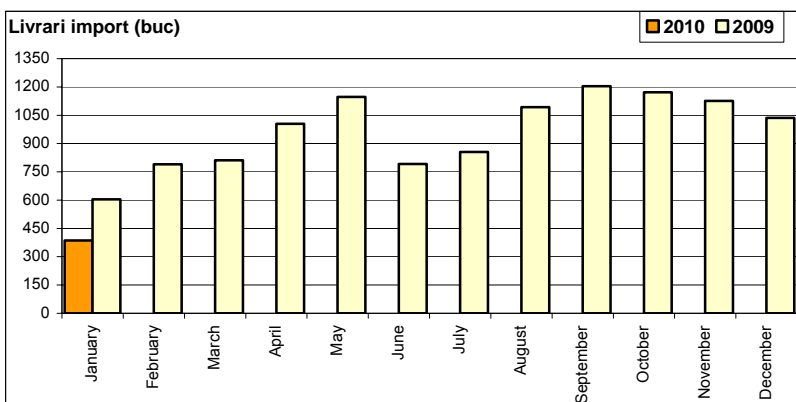
3 149



Livrari comerciale usoare + minibus import

Luna/An	2010	2009	Variatie
January	386	604	-36.1%
February	-	790	-
March	-	811	-
April	-	1 005	-
May	-	1 147	-
June	-	792	-
July	-	855	-
August	-	1 093	-
September	-	1 204	-
October	-	1 172	-
November	-	1 126	-
December	-	1 036	-
Total	386	604	-36.1%

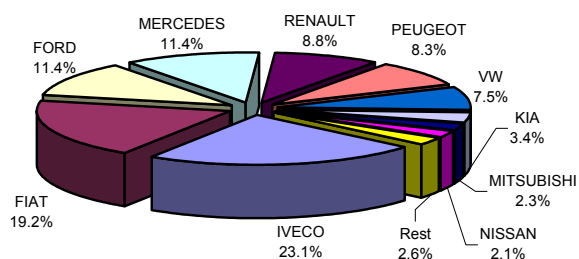
11 635



Top livrari comerciale <3.5t si minibus import - marci

MARCA	Ianuarie 2010			Ianuarie 2009			Variatie procent
	pozitie	unitati	pondere	pozitie	unitati		
IVECO	1	89	23.1%	7	47	↗	89.4%
FIAT	2	74	19.2%	1	98	↘	-24.5%
FORD	3	44	11.4%	2	89	↘	-50.6%
MERCEDES	4	44	11.4%	8	46	↘	-4.3%
RENAULT	5	34	8.8%	5	49	↘	-30.6%
PEUGEOT	6	32	8.3%	6	48	↘	-33.3%
VOLKSWAGEN	7	29	7.5%	3	84	↘	-65.5%
KIA	8	13	3.4%	13	5	↗	160.0%
MITSUBISHI	9	9	2.3%	11	8	↗	12.5%
NISSAN	10	8	2.1%	12	6	↗	33.3%
Rest		10	2.6%		124		-91.9%
TOTAL		386	100.0%		604		-36.1%

Livrari com <3.5t si minibus import - marci - ianuarie 2010



Top livrari comerciale <3.5t si minibus import - modele

MARCA	Ianuarie 2010			Ianuarie 2009			Variatie procent
	pozitie	unitati	pondere	pozitie	unitati		
IVECO DAILY	1	80	20.7%	3	47	↗	70.2%
FIAT DUCATO	2	62	16.1%	5	35	↗	77.1%
FORD TRANSIT	3	39	10.1%	1	77	↘	-49.4%
MERCEDES SPRINTE	4	38	9.8%	6	32	↗	18.8%
VOLKSWAGEN LT/CR	5	23	6.0%	8	26	↘	-11.5%
RENAULT MASTER	6	19	4.9%	10	24	↘	-20.8%
PEUGEOT BOXER	7	18	4.7%	7	27	↘	-33.3%
KIA K 2500/2700	8	13	3.4%	25	5	↗	160.0%
PEUGEOT EXPERT	9	12	3.1%	23	6	↗	100.0%
RENAULT TRAFIC BU	10	11	2.8%	16	11	→	0.0%
Rest		71	18.4%		314		-77.4%
TOTAL		386	100.0%		604		-36.1%

Livrari com <3.5t si minibus - modele - ianuarie 2010

