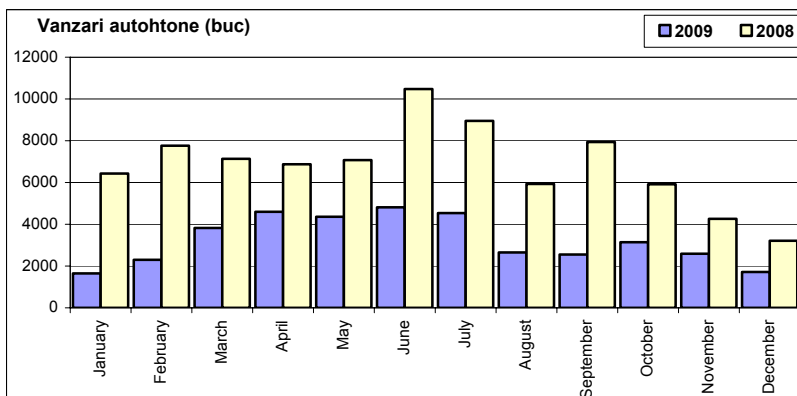


Top vânzări marci automobile - December 2009

	Autoturisme				Vehicule comerciale (inclusiv minibusuri și autobuze)				Total			
	unitati		cota piata		< 3.5 t		> 3.5 t		unitati		cota piata	
	Dec-09	Cumul-09	Dec-09	Cumul-09	Dec-09	Cumul-09	Dec-09	Cumul-09	Dec-09	Cumul-09	Dec-09	Cumul-09
DACIA	1 720	38 736	20.8%	29.8%	288	3 126	0	0	2 008	41 862	20.4%	28.3%
FORD	910	8 780	11.0%	6.7%	178	1 716	0	0	1 088	10 496	11.0%	7.1%
VOLKSWAGEN	761	9 441	9.2%	7.3%	85	1 316	16	159	862	10 916	8.7%	7.4%
HYUNDAI	694	10 798	8.4%	8.3%	1	184	0	0	695	10 982	7.1%	7.4%
RENAULT	553	8 934	6.7%	6.9%	79	952	42	228	674	10 114	6.8%	6.8%
SKODA	636	8 857	7.7%	6.8%	0	48	0	0	636	8 905	6.5%	6.0%
PEUGEOT	240	3 863	2.9%	3.0%	211	1 989	0	0	451	5 852	4.6%	4.0%
TOYOTA	393	3 546	4.8%	2.7%	40	450	0	0	433	3 996	4.4%	2.7%
FIAT	290	4 953	3.5%	3.8%	133	1 807	0	0	423	6 760	4.3%	4.6%
OPEL	401	5 846	4.9%	4.5%	20	192	0	0	421	6 038	4.3%	4.1%
CHEVROLET	272	3 769	3.3%	2.9%	0	0	0	0	272	3 769	2.8%	2.5%
KIA	247	6 145	3.0%	4.7%	7	18	0	0	254	6 163	2.6%	4.2%
IVECO	0	0	0.0%	0.0%	151	772	86	704	237	1 476	2.4%	1.0%
CITROEN	135	2 035	1.6%	1.6%	29	368	0	0	164	2 403	1.7%	1.6%
MERCEDES BEN	58	1 230	0.7%	0.9%	64	1 409	34	637	156	3 276	1.6%	2.2%
SUZUKI	147	2 422	1.8%	1.9%	0	0	0	0	147	2 422	1.5%	1.6%
BMW	115	1 138	1.4%	0.9%	0	0	0	0	115	1 138	1.2%	0.8%
NISSAN	89	1 230	1.1%	0.9%	21	178	0	0	110	1 408	1.1%	1.0%
MITSUBISHI	96	1 374	1.2%	1.1%	8	190	1	51	105	1 615	1.1%	1.1%
AUDI	101	1 289	1.2%	1.0%	0	0	0	0	101	1 289	1.0%	0.9%
Rest	404	5 807	4.9%	4.5%	9	46	93	1 229	506	7 082	5.1%	4.8%
TOTAL	8 262	130 193	100.0%	100.0%	1 324	14 761	272	3 008	9 858	147 962	100.0%	100.0%

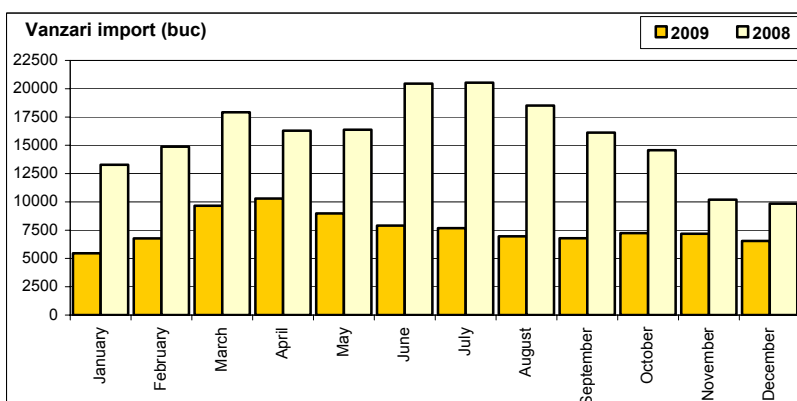
Vanzari autoturisme autohtone

Luna/An	2009	2008	Variatie
January	1 645	6 429	-74.4%
February	2 302	7 761	-70.3%
March	3 823	7 135	-46.4%
April	4 595	6 872	-33.1%
May	4 361	7 073	-38.3%
June	4 816	10 472	-54.0%
July	4 538	8 951	-49.3%
August	2 653	5 930	-55.3%
September	2 550	7 941	-67.9%
October	3 141	5 912	-46.9%
November	2 592	4 258	-39.1%
December	1 720	3 211	-46.4%
Total	38 736	81 945	-52.7%



Vanzari autoturisme import

Luna/An	2009	2008	Variatie
January	5 463	13 279	-58.9%
February	6 780	14 882	-54.4%
March	9 661	17 915	-46.1%
April	10 289	16 292	-36.8%
May	8 975	16 382	-45.2%
June	7 900	20 443	-61.4%
July	7 673	20 528	-62.6%
August	6 954	18 517	-62.4%
September	6 792	16 116	-57.9%
October	7 239	14 562	-50.3%
November	7 189	10 202	-29.5%
December	6 542	9 836	-33.5%
Total	91 457	188 954	-51.6%



Top vanzari autoturisme import - marci

MARCA	December		Variație Nov		2009		Variație 2008	
	poziție	unitati	poziție	procent	poziție	unitati	poziție	procent
HYUNDAI	3	694	4	↗ 0.1%	1	10798	6	↘ -17.1%
VOLKSWAGEN	2	761	3	↗ 1.2%	2	9441	2	↘ -54.3%
RENAULT	5	553	5	↘ -10.5%	3	8934	3	↘ -53.8%
SKODA	4	636	2	↘ -24.2%	4	8857	1	↘ -61.6%
FORD	1	910	1	↘ -5.0%	5	8780	4	↘ -48.9%
KIA	10	247	6	↗ -54.4%	6	6145	11	↘ -28.2%
OPEL	6	401	7	↗ 4.7%	7	5846	5	↘ -64.9%
FIAT	8	290	9	↘ -7.6%	8	4953	7	↘ -50.8%
PEUGEOT	11	240	8	↘ -36.8%	9	3863	8	↘ -61.2%
CHEVROLET	9	272	10	↘ -11.1%	10	3769	9	↘ -60.3%
Rest		1538		9.5%		20071		-51.0%
TOTAL		6542		-9.0%		91457		-51.6%

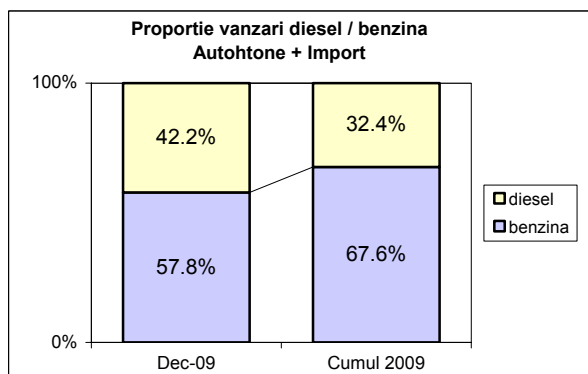
Top vanzari autoturisme import - modele

MODEL	December		Variație Nov		2009		Variație 2008	
	poziție	unitati	poziție	procent	poziție	unitati	poziție	procent
KIA CEE'D	5	230	1	↘ -53.7%	1	5689	4	↘ -25.3%
RENAULT CLIO	7	198	5	↘ -36.1%	2	5136	1	↘ -54.7%
FORD FOCUS	3	262	3	↘ -28.6%	3	3668	3	↘ -53.6%
SKODA OCTAVIA	1	314	4	↘ -13.0%	4	3536	2	↘ -62.1%
HYUNDAI i 30	10	173	2	↘ -59.3%	5	3435	21	↗ 31.5%
VOLKSWAGEN GOLF	2	300	8	↗ 15.4%	6	3017	11	↘ -38.4%
SKODA OCTAVIA TOUR	9	178	6	↘ -38.8%	7	2919	6	↘ -53.8%
RENAULT MEGANE	6	220	11	↗ 39.2%	8	2422	8	↘ -61.4%
OPEL ASTRA CLASSIC	25	84	21	↘ -16.0%	9	2186	5	↘ -66.1%
HYUNDAI i 10	39	45	25	↘ -47.7%	10	2009	18	-
Rest		4538		4.7%		57440		-53.4%
TOTAL		6542		-9.0%		91457		-51.6%

Vanzari autoturisme DIESEL

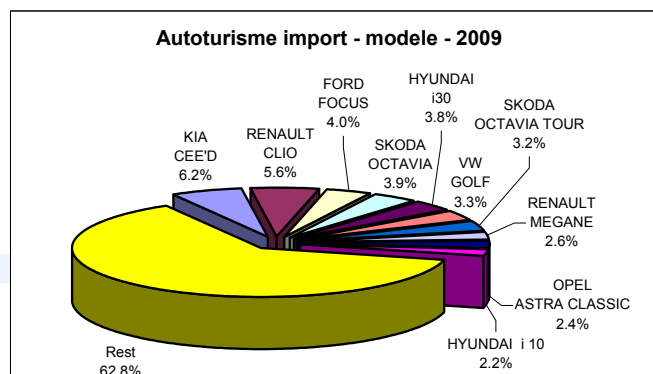
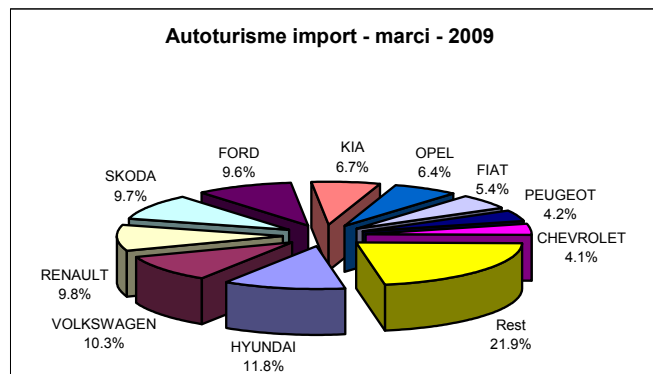
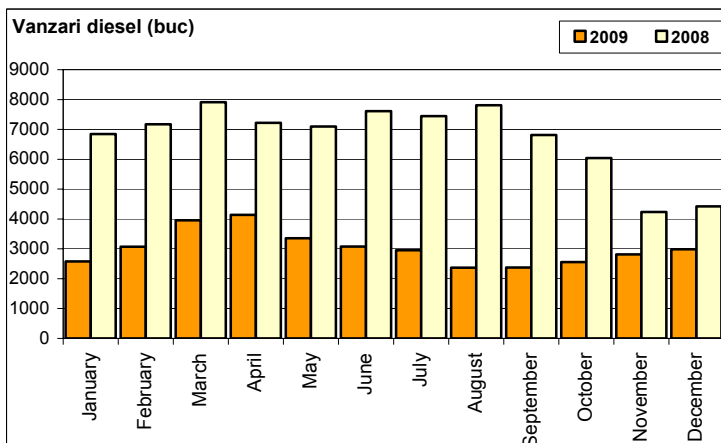
Autohtone + Import

	benzina		diesel		total
Dec-09	4 778	57.8%	3484	42.2%	8 262
Cumul 2009	88 064	67.6%	42129	32.4%	130 193



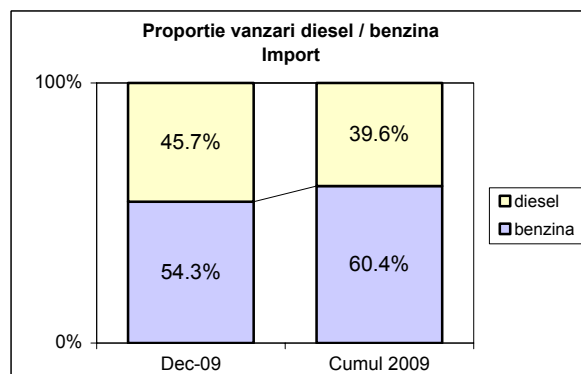
Vanzari autoturisme DIESEL - import

Luna/An	2009	pondere diesel	2008	pondere diesel	Variație 09/08
January	2 581	47.2%	6 846	51.5%	-62.3%
February	3 072	45.3%	7 173	58.7%	-57.2%
March	3 958	41.0%	7 910	46.1%	-50.0%
April	4 139	40.2%	7 223	50.0%	-42.7%
May	3 356	37.4%	7 099	38.8%	-52.7%
June	3 076	38.9%	7 612	41.9%	-59.6%
July	2 956	38.5%	7 445	38.0%	-60.3%
August	2 368	34.1%	7 811	38.2%	-69.7%
September	2 374	35.0%	6 814	39.9%	-65.2%
October	2 555	35.3%	6 039	30.9%	-57.7%
November	2 813	39.1%	4 232	22.0%	-33.5%
December	2 988	45.7%	4 422	22.6%	-32.4%
Total	36 236	39.6%	80 626	38.6%	-55.1%



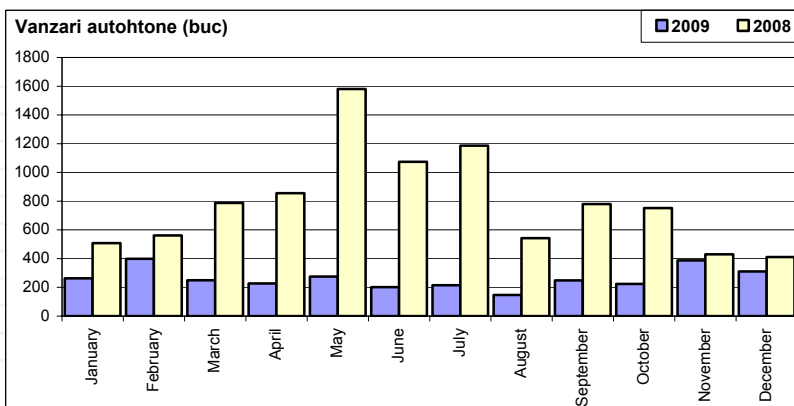
Import

	benzina		diesel		total
Dec-09	3 554	54.3%	2988	45.7%	6 542
Cumul 2009	55 221	60.4%	36236	39.6%	91 457



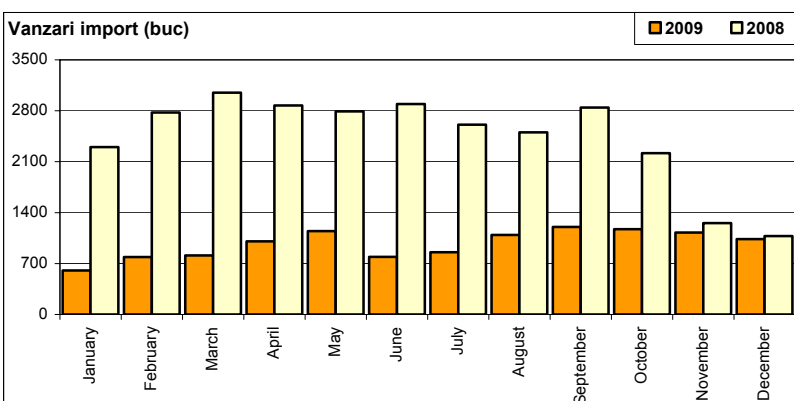
Vanzari comerciale usoare + minibus autohtone

Luna/An	2009	2008	Variatie
January	263	508	-48.2%
February	399	561	-28.9%
March	250	787	-68.2%
April	227	856	-73.5%
May	275	1 581	-82.6%
June	202	1 074	-81.2%
July	215	1 186	-81.9%
August	147	542	-72.9%
September	248	780	-68.2%
October	224	752	-70.2%
November	388	430	-9.8%
December	311	411	-24.3%
Total	3 149	9 468	-66.7%



Vanzari comerciale usoare + minibus import

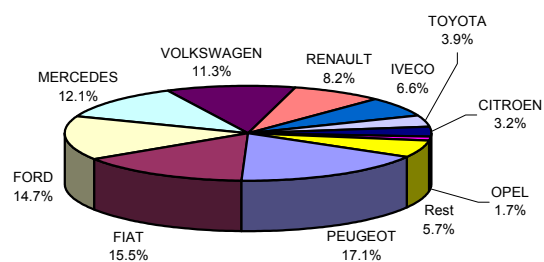
Luna/An	2009	2008	Variatie
January	604	2 301	-73.8%
February	790	2 776	-71.5%
March	811	3 048	-73.4%
April	1 005	2 873	-65.0%
May	1 147	2 791	-58.9%
June	792	2 893	-72.6%
July	855	2 608	-67.2%
August	1 093	2 504	-56.3%
September	1 204	2 844	-57.7%
October	1 172	2 217	-47.1%
November	1 126	1 257	-10.4%
December	1 036	1 077	-3.8%
Total	11 635	29 189	-60.1%



Vanzari comerciale <3.5t si minibus import - marci

MARCA	December		Variatie Nov		2009		Variatie 2008	
	pozitie	unitati	pozitie	procent	pozitie	unitati	pozitie	procent
PEUGEOT	1	211	1	↘ -48.9%	1	1989	4	↘ -28.2%
FIAT	4	133	2	↘ -38.7%	2	1807	1	↘ -68.7%
FORD	2	178	3	↗ 64.8%	3	1716	2	↘ -65.5%
MERCEDES BENZ	7	64	4	↘ -14.7%	4	1409	7	↘ -42.5%
VOLKSWAGEN	5	85	6	↗ 49.1%	5	1316	3	↘ -54.5%
RENAULT	6	79	7	↗ 41.1%	6	952	5	↘ -65.2%
IVECO	3	151	5	↗ 135.9%	7	772	6	↘ -71.6%
TOYOTA	8	40	8	↘ -11.1%	8	450	9	↘ -56.4%
CITROEN	9	29	10	↗ 45.0%	9	368	8	↘ -72.0%
OPEL	11	20	11	↗ 81.8%	10	192	12	↘ -65.0%
Rest		46		-23.3%		664		-66.4%
TOTAL		1036		-8.0%		11635		-60.1%

Vanzari com <3.5t si minibus import - marci - 2009



Vanzari comerciale <3.5t si minibus import - modele

MODEL	December		Variatie Nov		2009		Variatie 2008	
	pozitie	unitati	pozitie	procent	pozitie	unitati	pozitie	procent
PEUGEOT BOXER	2	155	1	↘ -48.5%	1	1494	4	↘ -25.2%
FORD TRANSIT	1	155	3	↗ 72.2%	2	1244	1	↘ -71.1%
MERCEDES SPRINTER	6	51	4	↘ -16.4%	3	1060	7	↘ -31.1%
FIAT DUCATO	4	82	2	↘ -54.9%	4	890	2	↘ -65.9%
IVECO DAILY	3	140	6	↗ 141.4%	5	725	3	↘ -72.0%
VOLKSWAGEN CADDY	25	7	30	↗ 75.0%	6	593	15	↘ -6.8%
FIAT DOBLO CARGO	9	38	12	↗ 100.0%	7	555	5	↘ -71.1%
TOYOTA HI-LUX	7	40	8	→ 0.0%	8	435	9	↘ -56.4%
RENAULT MASTER	8	38	11	↗ 90.0%	9	418	6	↘ -73.0%
VW LT/CRAFTER	5	62	9	↗ 67.6%	10	361	12	↘ -54.9%
Rest		268		-14.6%		3860		62.4%
TOTAL		1036		-8.0%		11635		-60.1%

Vanzari com <3.5t si minibus import - modele - 2009

