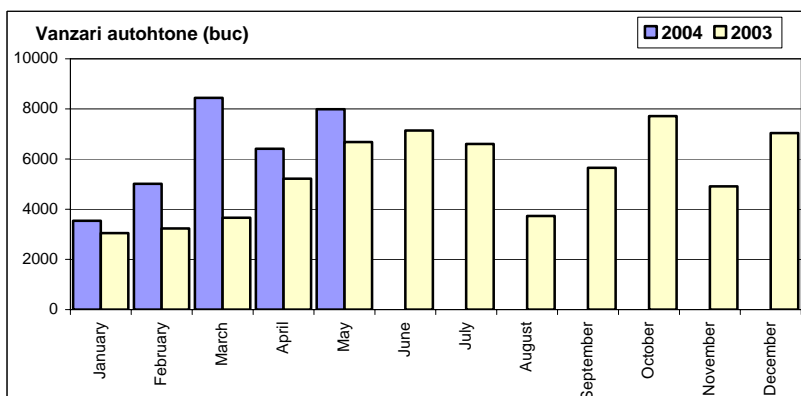


Vanzari autoturisme autohtone

Luna/An	2004	2003	Variatie
January	3 537	3 049	16.0%
February	5 013	3 231	55.2%
March	8 441	3 657	130.8%
April	6 412	5 214	23.0%
May	7 989	6 682	19.6%
June	-	7 138	-
July	-	6 603	-
August	-	3 731	-
September	-	5 653	-
October	-	7 711	-
November	-	4 913	-
December	-	7 036	-
Total	31 392	21 833	43.8%

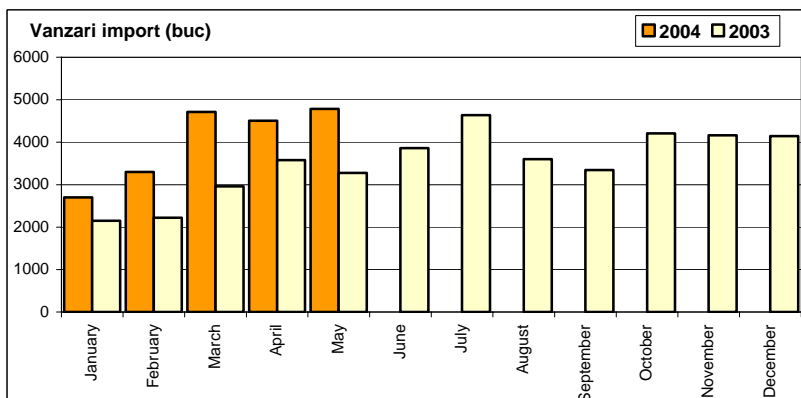
64 618



Vanzari autoturisme import

Luna/An	2004	2003	Variatie
January	2 702	2 149	25.7%
February	3 298	2 221	48.5%
March	4 714	2 960	59.3%
April	4 507	3 578	26.0%
May	4 784	3 276	46.0%
June	-	3 861	-
July	-	4 638	-
August	-	3 600	-
September	-	3 346	-
October	-	4 208	-
November	-	4 164	-
December	-	4 144	-
Total	20 005	14 184	41.0%

42 145

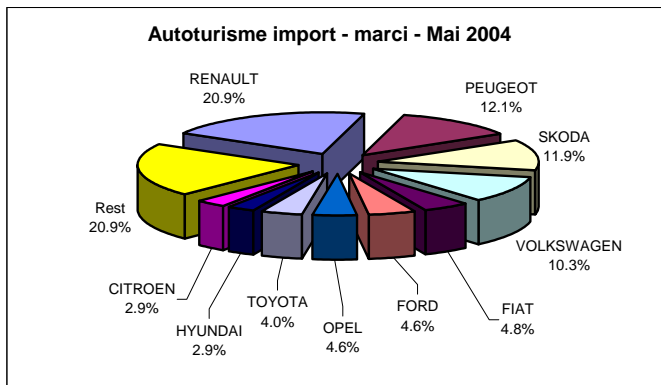


Top vânzări marci automobile - Mai 2004

	Autoturisme				Vehicule comerciale (inclusiv minibusuri si autobuze)				Total			
	nr. buc.		cota piata		< 3.5 t		> 3.5 t		nr. buc.		cota piata	
	May-04	Cumul-04	May-04	Cumul-04	May-04	Cumul-04	May-04	Cumul-04	May-04	Cumul-04	May-04	Cumul-04
DACIA	4 479	19 314	35.1%	37.6%	1 827	7 543	0	0	6 306	26 857	39.6%	41.8%
DAEWOO	3 496	11 989	27.4%	23.3%	47	120	0	0	3 543	12 109	22.3%	18.8%
RENAULT	1 002	3 833	7.8%	7.5%	77	390	26	155	1 105	4 378	6.9%	6.8%
PEUGEOT	580	2 223	4.5%	4.3%	103	461	0	0	683	2 684	4.3%	4.2%
VW	492	2 150	3.9%	4.2%	92	319	3	48	587	2 517	3.7%	3.9%
SKODA	571	2 979	4.5%	5.8%	0	0	0	0	571	2 979	3.6%	4.6%
FIAT	232	602	1.8%	1.2%	101	444	0	0	333	1 046	2.1%	1.6%
FORD	219	1 010	1.7%	2.0%	89	434	0	14	308	1 458	1.9%	2.3%
IVECO	0	0	0.0%	0.0%	80	300	193	801	273	1 101	1.7%	1.7%
OPEL	218	1 064	1.7%	2.1%	8	63	0	0	226	1 127	1.4%	1.8%
MERCEDES	69	479	0.5%	0.9%	36	157	106	524	211	1 160	1.3%	1.8%
TOYOTA	193	813	1.5%	1.6%	7	44	0	0	200	857	1.3%	1.3%
CITROEN	139	508	1.1%	1.0%	32	118	0	0	171	626	1.1%	1.0%
HYUNDAI	140	626	1.1%	1.2%	1	8	0	0	141	634	0.9%	1.0%
NISSAN	113	458	0.9%	0.9%	21	62	0	0	134	520	0.8%	0.8%
CHEVROLET	132	606	1.0%	1.2%	0	0	0	0	132	606	0.8%	0.9%
VOLVO	48	175	0.4%	0.3%	65	65	0	148	113	388	0.7%	0.6%
SEAT	108	461	0.8%	0.9%	0	0	0	0	108	461	0.7%	0.7%
AUDI	76	309	0.6%	0.6%	0	0	0	0	76	309	0.5%	0.5%
Rest	466	1 798	3.6%	3.5%	35	123	184	560	685	2 481	4.3%	3.9%
TOTAL	12 773	51 397	100.0%	100.0%	2 621	10 651	512	2 250	15 906	64 298	100.0%	100.0%

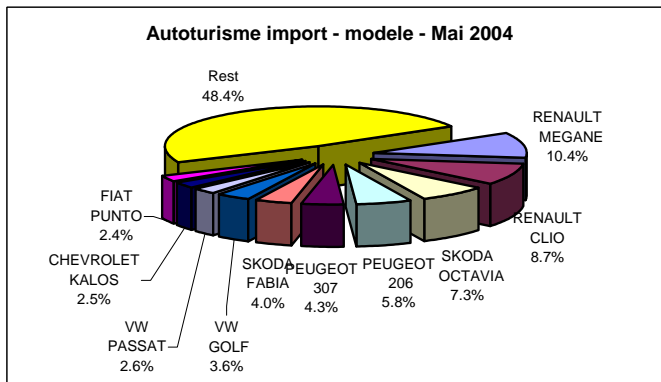
Top vanzari autoturisme import - marci

MARCA	Mai		Variație Aprilie		5 Iuni 2004		Variație 2003	
	poziție	valoare	poziție	procent	poziție	valoare	poziție	procent
RENAULT	1	1002	1	↗ 11.5%	1	3833	1	↗ 26.8%
PEUGEOT	2	580	3	↘ 1.2%	3	2223	4	↗ 26.5%
SKODA	3	571	2	↘ -9.1%	2	2979	2	↗ 49.4%
VOLKSWAGEN	4	492	4	↘ -10.9%	4	2150	3	↗ 12.3%
FIAT	5	232	8	↗ 63.4%	10	602	9	↗ 79.7%
FORD	6	219	6	↗ 9.5%	6	1010	6	↗ 28.3%
OPEL	7	218	5	↘ -15.2%	5	1064	5	↗ 27.9%
TOYOTA	8	193	7	↗ 1.6%	7	813	8	↗ 106.3%
HYUNDAI	9	140	9	↗ 4.5%	8	626	12	↗ 111.5%
CITROEN	10	139	12	↗ 35.0%	11	508	7	↗ 13.4%
Rest		998		20.4%		4197		74.7%
TOTAL		4784		6.1%		20005		41.0%



Top vanzari autoturisme import - modele

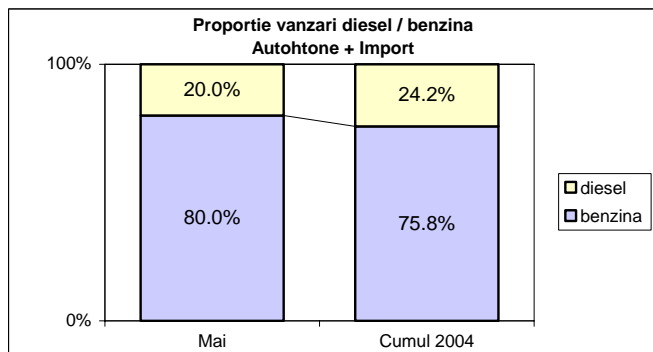
MODEL	Mai		Variație Aprilie		5 Iuni 2004		Variație 2003	
	poziție	valoare	poziție	procent	poziție	valoare	poziție	procent
RENAULT MEGANE	1	498	3	↗ 60.1%	2	1665	3	↗ 52.8%
RENAULT CLIO	2	417	1	↘ -15.8%	1	1783	1	↗ 13.6%
SKODA OCTAVIA	3	349	2	↘ -15.5%	3	1640	2	↗ 49.1%
PEUGEOT 206	4	279	4	↗ 4.1%	5	1017	6	↗ 29.2%
PEUGEOT 307	5	206	5	↘ -6.4%	6	841	7	↗ 22.4%
SKODA FABIA	6	191	7	↗ 6.1%	4	1191	5	↗ 48.9%
VW GOLF	7	170	6	↘ -19.81%	7	727	8	↗ 66.74%
VW PASSAT	8	123	8	↘ -11.5%	8	547	4	↘ -36.2%
CHEVROLET KALOS	9	120	11	↗ 20.0%	9	547	-	-
FIAT PUNTO	10	116	60	↗ 866.7%	23	187	21	↗ 38.5%
Rest		2315		7.3%		9860		46.7%
TOTAL		4784		6.1%		20005		41.0%



Vanzari autoturisme DIESEL

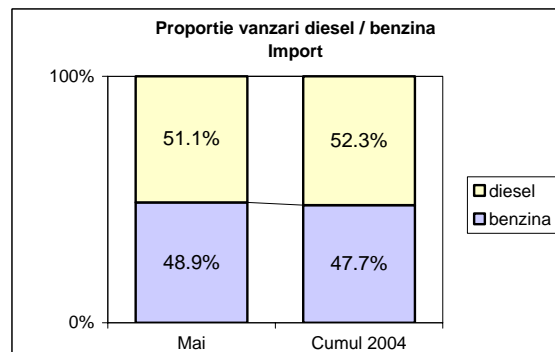
Autohtone + Import

	benzina	diesel	total
Mai	10 221	2552	12 773
Cumul 2004	38 960	12437	51 397



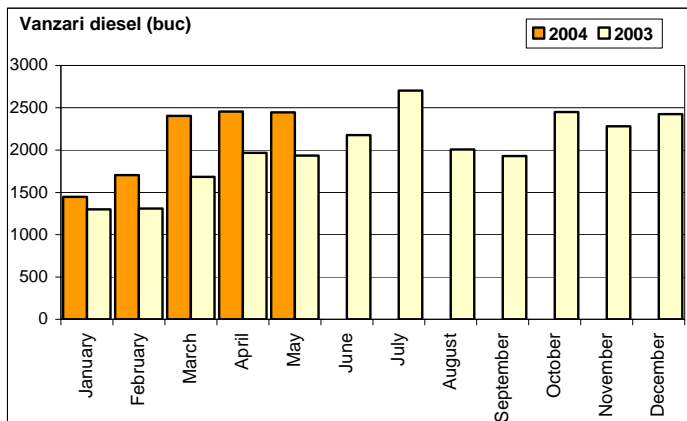
Import

	benzina	diesel	total
Mai	2 338	2446	4 784
Cumul 2004	9 548	10457	20 005



Vanzari autoturisme DIESEL - import

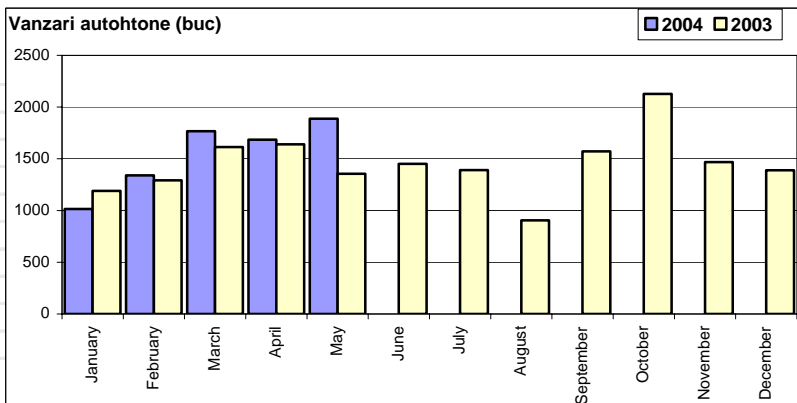
Luna/An	2004	D + B	pondere diesel	2003	pondere diesel	Variație 04/03
January	1 447	2 702	53.6%	1 299	60.4%	11.4%
February	1 704	3 298	51.7%	1 309	58.9%	30.2%
March	2 405	4 714	51.0%	1 684	56.9%	42.8%
April	2 455	4 507	54.5%	1 968	55.0%	24.7%
May	2 446	4 784	51.1%	1 935	59.1%	26.4%
June	-	-	-	2 177	56.4%	-
July	-	-	-	2 704	58.3%	-
August	-	-	-	2 007	55.8%	-
September	-	-	-	1 929	57.7%	-
October	-	-	-	2 449	58.2%	-
November	-	-	-	2 282	54.8%	-
December	-	-	-	2 424	58.5%	-
Total	10 457	20 005	52.3%	8 195	57.8%	27.6%



Vanzari comerciale usoare + minibus autohtone

Luna/An	2004	2003	Variatie
January	1 015	1 190	-14.7%
February	1 340	1 291	3.8%
March	1 766	1 614	9.4%
April	1 685	1 640	2.7%
May	1 887	1 355	39.3%
June	-	1 451	-
July	-	1 391	-
August	-	905	-
September	-	1 572	-
October	-	2 127	-
November	-	1 468	-
December	-	1 390	-
Total	7 693	7 090	8.5%

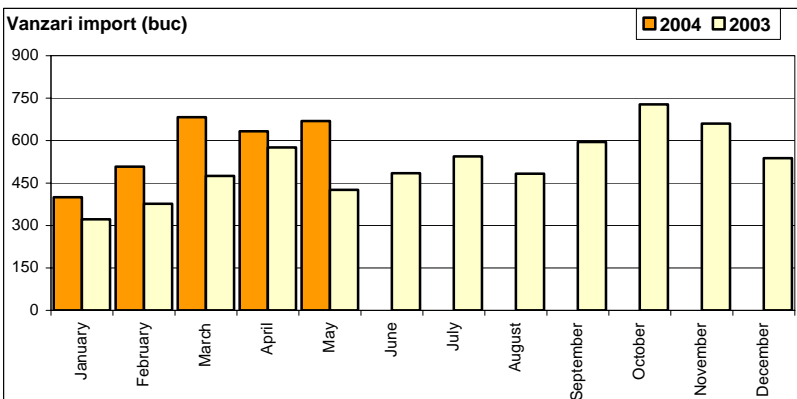
17 394



Vanzari comerciale usoare + minibus import

Luna/An	2004	2003	Variatie
January	400	322	24.2%
February	508	377	34.7%
March	683	475	43.8%
April	633	576	9.9%
May	669	426	57.0%
June	-	485	-
July	-	544	-
August	-	483	-
September	-	595	-
October	-	728	-
November	-	660	-
December	-	538	-
Total	2 893	2 176	33.0%

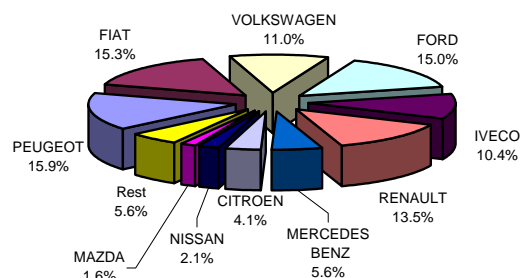
6 209



Vanzari comerciale <3.5t si minibus import - marci

MARCA	Mai		Variație Martie		5 luni 2004		Variație 2003	
	poziție	valoare	poziție	procent	poziție	valoare	poziție	procent
PEUGEOT	1	103	4 ↗	21.2%	1	461	3 ↗	38.9%
FIAT	2	101	5 ↗	23.2%	2	444	1 ↘	-23.2%
VOLKSWAGEN	3	92	3 ↗	7.0%	5	319	2 ↘	-11.9%
FORD	4	89	1 ↘	-14.4%	3	434	4 ↗	47.6%
IVECO	5	80	6 ↗	42.9%	6	300	16 ↗	252.1%
RENAULT	6	77	2 ↘	-23.0%	4	390	5 ↗	134.9%
MERCEDES BENZ	7	36	7 ↗	12.5%	7	157	6 ↗	15.4%
CITROEN	8	32	8 ↗	23.1%	8	118	7 ↘	-2.5%
NISSAN	9	21	9 ↗	61.5%	10	62	14 ↗	416.7%
MAZDA	10	13	10 -	0.0%	11	47	10 ↗	113.6%
Rest		25		-30.6%		161		5.9%
TOTAL		669		5.7%		2893		33.0%

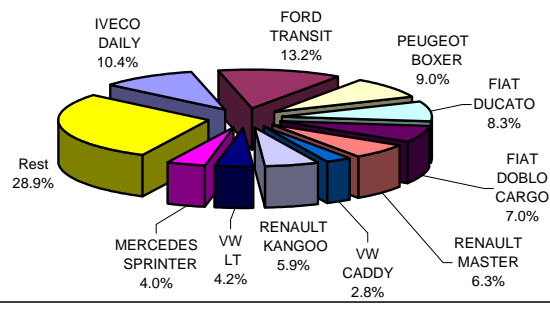
Vanzari com <3.5t si minibus import - marci - 5 luni 2004



Vanzari comerciale <3.5t si minibus import - modele

MODEL	Mai		Variație Martie		5 luni 2004		Variație 2003	
	poziție	valoare	poziție	procent	poziție	valoare	poziție	procent
IVECO DAILY	1	80	3 ↗	42.9%	2	300	-	252.1%
FORD TRANSIT	2	79	1 ↘	-9.2%	1	383	3 ↗	42.4%
PEUGEOT BOXER	3	66	2 ↘	10.0%	3	260	5 ↗	39.8%
FIAT DUCATO	4	57	5 ↗	39.0%	4	241	2 ↗	-15.7%
FIAT DOBLO CARGO	5	43	6 ↘	4.9%	5	202	1 ↘	-30.6%
RENAULT MASTER	6	36	7 ↘	-2.7%	6	181	11 ↘	141.3%
VW CADDY	7	35	10 ↘	34.6%	12	80	12 ↗	29.0%
RENAULT KANGOO	8	34	4 ↗	-22.7%	7	171	9 ↘	90.0%
VW LT	9	33	9 ↘	17.9%	9	122	7 ↗	9.9%
MERCEDES SPRINTER	10	29	11 ↗	20.8%	11	117	8 ↘	23.2%
Rest		177		-6.3%		836		17.7%
TOTAL		669		5.7%		2893		33.0%

Vanzari com <3.5t si minibus - modele - 5 luni 2004



A. AUTOTURISME

PASSENGER CARS

A.1. PRODUCTIE + ASAMBLARE PRODUCTION + ASSEMBLY	2004			2003	Variatia 2004/2003
	Mai May	Variatia luna ant.	5 luni 5 months	5 luni 5 months	
ARO	21	-41.7%	109	325	-66.5%
10	0	-	0	6	-
1.4	0	-	0	2	-
1.9 TD	0	-	0	4	-
24	21	-41.7%	109	319	-65.8%
	0	-	3	2	50.0%
	0	-	0	49	-94%
3 vol	1.5				
NUBIRA	75	-48.6%	357	319	29.8%
3 vol	1.6				
Break	1.6				
LEGANZA	0	-	0	0	-
TACUMA	0	-	0	0	-
DAMAS	0	-	0	0	-
TOTAL	9120	30.2%	36950	22732	62.5%

A.2. EXPORT EXPORTS	2004			2003	Variatia 2004/2003
	Mai May	Variatia luna ant.	5 luni 5 months	5 luni 5 months	
ARO	0	-	22	47	-53.2%
10	0	-	0	6	-
1.4	0	-	0	4	-
1.9 TD	0	-	0	2	-
24	0	-	22	41	-46.3%
			1	2	50.0%
NUBIRA	0	-	0	0	-
LEGANZA	0	-	0	0	-
TOTAL	1898	0.0%	6371	2480	156.9%

A.3. VANZARI SALES	2004			2003	Variatia 2004/2003
	Mai May	Variatia luna ant.	5 luni 5 months	5 luni 5 months	
ALFA ROMEO	21	75.0%	64	51	25.5%
147	6	-14.3%	22	26	-15.4%
1.6 /105	2	0.0%	5	6	-16.7%
1.6 /120	2	-33.3%	9	9	0.0%
2.0	0	-	1	6	-83.3%
1.9 TD/115	0	-	4	5	-20.0%
1.9 TD/140	2	-	3	0	-
156	14	180.0%	41	21	95.2%
3 vol	14	180.0%	41	16	156.3%
1.6	5	400.0%	11	3	266.7%
1.8	1	-	1	1	0.0%
	0	-	6	6	0.0%
			3	2	50.0%
2.4 T					
2.9 T	1	-			0.0%
2.4 TD	6	-	13	2	550.0%
Cross Country	0	-	6	3	100.0%
XC 90	7	75.0%	27	36	-25.0%
2.5 T	2	100.0%	6	4	50.0%
2.9 T	1	-66.7%	7	11	-36.4%
2.4 TD	4	-	14	21	-33.3%
TOTAL	12773	17.0%	51397	36017	42.7%

B. VEHICULE COMERCIALE USOARE sub 3.5t GVW

LIGHT COMMERCIAL VEHICLES under 3.5t GVW

B.1. PRODUCTIE + ASAMBLARE PRODUCTION + ASSEMBLY	2004			2003	Variatia 2004/2003
	Mai May	Variatia luna ant.	5 luni 5 months	5 luni 5 months	
ARO	14	-60.0%	61	63	-3.2%
10	0	-	0	0	-
32	14	-60.0%	61	63	-3.2%
DACIA	2044	28.8%	9139	7669	19.2%
CAMIONETE/PICK-UP	2044	28.8%	9139	7669	19.2%
1.6	546	24.4%	2728	877	211.1%
1.9 D	1498	30.5%	6411	6792	-5.6%
DAEWOO	1	-	121	65	86.2%
MATIZ VAN 0.8	1		121	65	
TOTAL	2059	26.9%	9321	7797	19.5%

B.2. EXPORT EXPORTS	2004			2003	Variatia 2004/2003
	Mai May	Variatia luna ant.	5 luni 5 months	5 luni 5 months	
ARO	0	-	18	7	157.1%
10 1.9 TD	0	-	0	1	-
32 2.5 TD	0	-	18	6	200.0%
DACIA	223	6.7%	1014	718	41.2%
CAMIONETE/PICK-UP	223	6.7%	1014	718	41.2%
1.6	0	-	1	11	-90.9%
1.9 D	223	7.2%	1013	707	43.3%
TOTAL	223	2.8%	1032	725	42.3%

B.3. VANZARI SALES	2004			2003	Variatia 2004/2003
	Mai May	Variatia luna ant.	5 luni 5 months	5 luni 5 months	
ARO	13	-7.1%	30	131	-77.1%
10	0	-	2	19	-89.5%
1.4	0	-	0	19	-
1.9 TD	0	-	2	0	-
32	13	0.0%	28	112	-75.0%
2.5 D	0	-	0	1	-
2.5 TD	13	0.0%	28	111	-74.8%
CITROEN	32	28.0%	116	115	0.9%
BERLINGO	7	16.7%	38	43	-11.6%
1.4	1	-	1	0	-
1.9 D	6	0.0%	37	43	-14.0%
JUMPER	25	31.6%	73	72	1.4%
1.9 TD	0	-	0	0	-
2.5 TD	0	-	0	0	-
LT	26	36.8%	86	76	13.2%
Furgon	21	10.5%	79	76	3.9%
2.5 TD	20	25.0%	75	44	70.5%
2.8 TD	1	-66.7%	4	32	-87.5%
Platforma	5	-	7	0	-
2.5 TD	4	-	6	0	-
2.8 TD	1	-	1	0	-
TOTAL	2515	12.5%	10340	9015	14.7%

C. VEHICULE COMERCIALE INTRE 3.5-6 t GVW

COMMERCIAL VEHICLES 3.5-6 t GVW

C.1. PRODUCTIE + ASAMBLARE PRODUCTION + ASSEMBLY	2004			2003	Variatia 2004/2003
	Mai May	Variatia luna ant.	5 luni 5 months	5 luni 5 months	
ROCAR	0	-	0	0	-
TOTAL	0	-	0	0	-

C.3. VANZARI SALES	2004			2003	Variatia 2004/2003
	Mai May	Variatia luna ant.	5 luni 5 months	5 luni 5 months	
DAEWOO	0	-	0	0	-
AVIA	0		0	0	
FORD	4	-20.0%	18	39	-53.8%
TRANSIT	4		18	39	
GAZ			0	2	
5.0 tone					
5.5 tone	3	200.0%			-53.8%
6.0 tone	0	-	2	7	-71.4%
ROCAR	0	-	0	0	-
VOLKSWAGEN	3	-88.5%	48	0	-
LT 4.6 tone	3		48	0	
TOTAL	92	-20.0%	516	753	-31.5%

D. VEHICULE COMERCIALE INTRE 6 - 18 t GVW

COMMERCIAL VEHICLES 6 - 18 t GVW

D.1. PRODUCTIE + ASAMBLARE PRODUCTION + ASSEMBLY	2004			2003	Variatia 2004/2003
	Mai May	Variatia luna ant.	5 luni 5 months	5 luni 5 months	
ROMAN	11	-	24	52	-53.8%
ROMAN	11		24	52	
TOTAL	11	-	24	52	-53.8%

D.2. EXPORT EXPORTS	2004			TOTAL	
	Mai May		2004	2003	
ROMAN	0	-	0	1	-
ROMAN	0	-	0	1	-
TOTAL	0	-	0	1	-

D.3. VANZARI SALES	2004			2003	Variatia 2004/2003
	Mai May	Variatia luna ant.	5 luni 5 months	5 luni 5 months	
BMC	16	-	28	6	366.7%
PRO 518 9 tone	1	-	3	0	-
PRO 625 12 t	9	-	18	6	200.0%
PRO 625 12 t	0	-	7	0	
ROMAN	11		15	15	-24.4%
SCANIA	0	-	0	-	-
P 94	0	-	0	0	-
VOLVO	0	-	1	0	-
FL6, FL10	0	-	1	0	-
FL E/H	0	-	0	0	-
TOTAL	144	42.6%	577	376	53.5%

E. VEHICULE COMERCIALE PESTE 18 t GVW

COMMERCIAL VEHICLES OVER 18 t GVW

E.1. PRODUCTIE + ASAMBLARE PRODUCTION + ASSEMBLY	2004			2003	Variatia 2004/2003
	Mai May	Variatia luna ant.	5 luni 5 months	5 luni 5 months	
ROMAN	16	0.0%	87	31	180.6%
ROMAN	16	0.0%	87	31	180.6%
TOTAL	16	0.0%	87	31	180.6%

E.2. EXPORT EXPORTS	2004			2003	Variatia 2004/2003
	Mai May	Variatia luna ant.	5 luni 5 months	5 luni 5 months	
ROMAN	0	-	0	14	-
ROMAN	0	-	0	14	-
TOTAL	0	-	0	14	-

E.3. VANZARI SALES	2004			2003	Variatia 2004/2003
	Mai May	Variatia luna ant.	5 luni 5 months	5 luni 5 months	
BMC	5	-	18	0	-
PRO 625 18 tone	5	-	12	0	-
PRO 628 18 tone	0	-	6	0	-
DAF	18	-35.7%	113	41	175.6%
CF 65 20 tone	0	-	0	0	-
CF 65 34 tone	0	-	13	0	-
FM9, FM12 21.6 tone	47	-24.2%	132	43	237.8%
28 tone	32	23.1%	83	17	388.2%
34 tone	0	-	1	4	-75.0%
35 tone	0	-	13	5	160.0%
35 tone	1	-	1	0	-
40 tone	14	-51.7%	54	19	184.2%
TOTAL	292	11.9%	1102	491	124.4%

F. AUTOBUZE - PANA LA 16 LOCURI

BUSSES / UP TO 16 PLACES)

F.1. PRODUCTIE + ASAMBLARE PRODUCTION + ASSEMBLY	2004			2003	Variatia 2004/2003
	Mai May	Variatia luna ant.	5 luni 5 months	5 luni 5 months	
ROCAR	0	-	0	1	-
TV 15 , TV 35	0		0	1	
TOTAL	0	-	0	1	-

F.3. VANZARI SALES	2004			2003	Variatia 2004/2003
	Mai May	Variatia luna ant.	5 luni 5 months	5 luni 5 months	
CITROEN	0	-	2	6	-66.7%
JUMPER 2.2 TD	0		2	6	
FIAT	2	0.0%	9	8	12.5%
DUCATO	2	0.0%	9	8	12.5%
9 - 16 locuri	7	-22.2%	7	7	2.9%
2.5 TD	2	0.0%	4	12	-66.7%
2.8 TD	5	-28.6%	32	23	39.1%
TOTAL	41	-50.0%	246	251	-2.0%

G. AUTOBUZE - PESTE 16 LOCURI

BUSSES / OVER 16 PLACES)

G.1. PRODUCTIE + ASAMBLARE PRODUCTION + ASSEMBLY	2004			2003	Variatia 2004/2003
	Mai May	Variatia luna ant.	5 luni 5 months	5 luni 5 months	
ROCAR	0	-	0	0	-
TOTAL	0	-	0	0	-

G.3. VANZARI SALES	2004			2003	Variatia 2004/2003
	Mai May	Variatia luna ant.	5 luni 5 months	5 luni 5 months	
ASTRA	0	-	0	0	-
BMC	14	-	50	0	-
FORD	1	-	0	1	-
ISUZU	1	-	18	0	-
NISSAN	0	-	0	0	-
TOYOTA	0	-	0	0	-
RENAULT	0	-	0	0	-
ROCAR	0	-	0	0	-
SCANIA	0	-	0	1	-
TEMSA	2	-	2	0	-
TOYOTA	0	-	0	0	-
VOLVO	0	-	1	0	-
TOTAL	53	783.3%	124	39	217.9%

H. TOTALURI

TOTALS

H1. PRODUCTIE + ASAMBLARE PRODUCTION + ASSEMBLY	2004			2003 5 luni / 5 months	Variatia 2004/2003
	Mai May	Variatia luna ant.	5 luni / 5 months		
AUTOTURISME / PASSENGER CARS	9 120	30.2%	36 950	22 732	62.5%
VEHICULE COMERCIALE / COMMERCIAL VEH.	2 086	27.4%	9 432	7 880	19.7%
SUB 3.5t GVW / UNDER 3.5t GVW	2 059	26.9%	9 321	7 797	19.5%
3.5 - 6 t GVW	0	-	0	0	-
6 - 18 t GVW	11	-	24	52	-53.8%
PESTE 18t GVW / OVER 18t GVW	16	0.0%	87	31	180.6%
AUTOBUZE / BUSES	0	-	0	1	-
PANA LA 16 LOCURI / UP TO 16 PLACES	0	-	0	1	-
PESTE 16 LOCURI / OVER 16 PLACES	0	-	0	0	-
TOTAL	11 206	29.6%	46 382	30 613	51.5%

H2. EXPORT EXPORT	2004			2003 5 luni / 5 months	Variatia 2004/2003
	Mai May	Variatia luna ant.	5 luni / 5 months		
AUTOTURISME / PASSENGER CARS	1 898	0.0%	6 371	2 480	156.9%
VEHICULE COMERCIALE / COMMERCIAL VEH.	223	2.8%	1 032	740	39.5%
SUB 3.5t GVW / UNDER 3.5t GVW	223	2.8%	1 032	725	42.3%
3.5 - 6 t GVW	0	-	0	0	-
6 - 18 t GVW	0	-	0	1	-
PESTE 18t GVW / OVER 18t GVW	0	-	0	14	-
AUTOBUZE / BUSES	0	-	0	0	-
TOTAL	2 121	0.3%	7 403	3 220	129.9%

H3. IMPORT IMPORT	2004			2003 5 luni / 5 months	Variatia 2004/2003
	Mai May	Variatia luna ant.	5 luni / 5 months		
AUTOTURISME / PASSENGER CARS	4 784	6.1%	20 005	14 184	41.0%
VEHICULE COMERCIALE / COMMERCIAL VEH.	1 125	11.2%	4 735	3 493	35.6%
SUB 3.5t GVW / UNDER 3.5t GVW	628	14.0%	2 647	1 926	37.4%
3.5 - 6 t GVW	92	-20.0%	516	753	-31.5%
6 - 18 t GVW	133	31.7%	554	342	62.0%
PESTE 18t GVW / OVER 18t GVW	272	11.0%	1 018	472	115.7%
AUTOBUZE / BUSES	94	6.8%	370	289	28.0%
PANA LA 16 LOCURI / UP TO 16 PLACES	41	-50.0%	246	250	-1.6%
PESTE 16 LOCURI / OVER 16 PLACES	53	783.3%	124	39	217.9%
TOTAL	6 003	7.1%	25 110	17 966	39.8%

H4. VANZARI SALES	2004			2003 5 luni / 5 months	Variatia 2004/2003
	Mai May	Variatia luna ant.	5 luni / 5 months		
AUTOTURISME / PASSENGER CARS	12 773	17.0%	51 397	36 017	42.7%
VEHICULE COMERCIALE / COMMERCIAL VEH.	3 043	12.2%	12 535	10 635	17.9%
SUB 3.5t GVW / UNDER 3.5t GVW	2 515	12.5%	10 340	9 015	14.7%
3.5 - 6 t GVW	92	-20.0%	516	753	-31.5%
6 - 18 t GVW	144	42.6%	577	376	53.5%
PESTE 18t GVW / OVER 18t GVW	292	11.9%	1 102	491	124.4%
AUTOBUZE / BUSES	94	6.8%	370	290	27.6%
PANA LA 16 LOCURI / UP TO 16 PLACES	41	-50.0%	246	251	-2.0%
PESTE 16 LOCURI / OVER 16 PLACES	53	783.3%	124	39	217.9%
TOTAL	15 910	16.0%	64 302	46 942	37.0%

Situație vânzări automobile - Mai 2004 / Vehicles sales - May 2004

Marca Make	Autoturisme Passenger cars		Com.<3.5t +Minibus LCV+Minibuses		Com.>3.5t+Bus CV over 3.5t+Buses		Autovehicule usoare Light vehicles		Autovehicule comerciale Commercial vehicles		Total	
	1		2		3		1 + 2		2 + 3		1 + 2 + 3	
	May	YTD 2004	May	YTD 2004	May	YTD 2004	May	YTD 2004	May	YTD 2004	May	YTD 2004
ALFA ROMEO	21	64	0	0	0	0	21	64	0	0	21	64
ARO	14	89	13	30	0	0	27	119	13	30	27	119
AUDI	76	309	0	0	0	0	76	309	0	0	76	309
BMC	0	0	0	0	35	96	0	0	35	96	35	96
BMW	73	303	0	0	0	0	73	303	0	0	73	303
CADILLAC	2	8	0	0	0	0	2	8	0	0	2	8
CHEVROLET	132	606	0	0	0	0	132	606	0	0	132	606
CHRYSLER	12	21	0	0	0	0	12	21	0	0	12	21
CITROEN	139	508	32	118	0	0	171	626	32	118	171	626
DACIA	4 479	19 314	1 827	7 543	0	0	6 306	26 857	1 827	7 543	6 306	26 857
DAEWOO	3 496	11 989	47	120	0	0	3 543	12 109	47	120	3 543	12 109
DAF	0	0	0	0	28	145	0	0	28	145	28	145
FIAT	232	602	101	444	0	0	333	1 046	101	444	333	1 046
FORD	219	1 010	89	434	4	18	308	1 444	93	452	312	1 462
GAZ	0	0	0	1	0	0	0	1	0	1	0	1
HONDA	42	118	0	0	0	0	42	118	0	0	42	118
HUMMER	0	4	0	0	0	0	0	4	0	0	0	4
HYUNDAI	140	626	1	8	0	0	141	634	1	8	141	634
ISUZU	0	0	0	0	5	18	0	0	5	18	5	18
IVECO	0	0	80	300	193	801	80	300	273	1 101	273	1 101
JAGUAR	2	4	0	0	0	0	2	4	0	0	2	4
JEEP	43	90	0	0	0	0	43	90	0	0	43	90
KIA	0	29	0	10	0	0	0	39	0	10	0	39
LADA	15	118	0	1	0	0	15	119	0	1	15	119
LAND ROVER	14	57	0	0	0	0	14	57	0	0	14	57
LEXUS	4	22	0	0	0	0	4	22	0	0	4	22
MAN	0	0	0	0	46	134	0	0	46	134	46	134
MASERATI	1	4	0	0	0	0	1	4	0	0	1	4
MAYBACH	0	1	0	0	0	0	0	1	0	0	0	1
MAZ	0	0	0	0	25	25	0	0	25	25	25	25
MAZDA	33	163	13	47	0	0	46	210	13	47	46	210
MERCEDES	69	479	36	157	106	524	105	636	142	681	211	1 160
MG	4	6	0	0	0	0	4	6	0	0	4	6
MINI	3	19	0	0	0	0	3	19	0	0	3	19
MITSUBISHI	51	216	9	33	0	0	60	249	9	33	60	249
NISSAN	113	458	21	62	0	0	134	520	21	62	134	520
OPEL	218	1 064	8	63	0	0	226	1 127	8	63	226	1 127
PEUGEOT	580	2 223	103	461	0	0	683	2 684	103	461	683	2 684
PORSCHE	8	26	0	0	0	0	8	26	0	0	8	26
RENAULT	1 002	3 833	77	390	26	155	1 079	4 223	103	545	1 105	4 378
ROMAN	0	0	0	0	31	107	0	0	31	107	31	107
ROVER	21	75	0	0	0	0	21	75	0	0	21	75
SAAB	8	26	0	0	0	0	8	26	0	0	8	26
SCANIA	0	0	0	0	12	24	0	0	12	24	12	24
SEAT	108	461	0	0	0	0	108	461	0	0	108	461
SKODA	571	2 979	0	0	0	0	571	2 979	0	0	571	2 979
SMART	2	9	0	0	0	0	2	9	0	0	2	9
SSANGYONG	4	28	0	0	0	0	4	28	0	0	4	28
SUBARU	29	108	0	0	0	0	29	108	0	0	29	108
SUZUKI	60	190	0	1	0	0	60	191	0	1	60	191
TATRA	0	0	0	0	0	9	0	0	0	9	0	9
TEMSA	0	0	0	0	2	2	0	0	2	2	2	2
TOYOTA	193	813	7	44	0	0	200	857	7	44	200	857
VOLVO	48	175	0	0	65	213	48	175	65	213	113	388
VW	492	2 150	92	319	3	48	584	2 469	95	367	587	2 517
TOTAL	12 773	51 397	2 556	10 586	581	2 319	15 329	61 983	3 137	12 905	15 910	64 302

Situatia teritoriala a vanzarilor efective / Teritorial effective sales

Autoturisme

Mai 2004 / May 2004

Cars

MARCA, MODEL / JUDET	ALBA	ARAD	ARGES	BACAU	BIHOR	BISTRITA	BOTOSANI	BRASOV	BRAILA	BUZAU	CALARASI	CARAS SEV.	CLUJ	CONSTANTA	COVASNA	DAMBOVITA	DOLJ	GALATI	GIURGIU	GORJ	HARGHITA	HUNEDOARA	IALOMITA	IASI	MARAMURES	MEHEDINTI	MURES	NEAMT	OLT	PRAHOVA	SATU MARE	SALAJ	SIBIU	SUCEAVA	TELEORMAN	TIMIS	TULCEA	VASLUI	VALCEA	VRANCEA	BUCURESTI	TOTAL	
ALFA ROMEO							2						1				1							2																	15	21	
147																								2																		4	6
156								2					1				1																									10	14
SPIDER																																									1	1	
ARO			2																																							12	14
10			1																																							1	1
24			1																																						12	13	
AUDI			3	4			9						3	3			2						2	2								1		5		6	1	35	76				
A3							3						1										1	1									1		1					3	11		
A4			3	2			2										2						1											2		1				18	32		
A6				1																																				5	7		
A6 C6							2						1												1										1		1		2	9			
A8				1			1							2																									5	9			
Allroad quattro							1						1	1																				1		2		2	8				
BMW		3					13						5	7													1														44	73	
SERIA 3														1																										10	11		
SERIA 5		2					4						2	2																										8	18		
SERIA 6							1							1																										3	5		
SERIA 7							1																																	2	3		
Z4																																								1	1		
X3																																									1	1	
X5													2	1													1													1	2		
MINI																																									1	7	
COOPER																																								3	7		
LAND CRUISER 100																																									2	3	
VOLKSWAGEN			6	19	16		30						34	47			11						10	2									18	16		64		18	11	174	492		
POLO				2	1		2						5	12			2				2		3				1							3	5					25	63		
GOLF V			5	9	5		14						15	12						6			2	2								5	5		24		8	6	48	170			
BORA					2								1	8									1									1	3		3		6		19	47			
PASSAT			1	4	4		11						7	10						1			2									7	2		19		1	4	46	123			
PHAETON																																								1	1		
TUAREG				1	1		1						1				1										1													3	37		
TOURAN				2	3		1						1	2									2										1	2		3		1		11	30		
SHARAN							1						1																												2	4	
CADDY COMBI				1													1																								2	4	
VOLVO							4						4	8																											32	48	
S 40							1						3	5																											14	23	
S 40 new																																									1	1	
V 40							1																																		1	2	
V 50							1						1	1																												3	3
S 60							1																																		3	5	
S 80																																									7	7	
XC 90																																									6	7	
TOTAL	65	218	539	315	288	60	48	499	320	108	16	89	487	625	49	65	469	219	31	75	147	175	41	411	174	30	182	85	62	304	100	24	180	147	96	526	49	72	150	151	5082	12773	

Situatie vanzari automobile functie de modul de achizitionare

Autoturisme Passenger Cars	Mai 2004 / May 2004					CUMULAT2004 / YTD2004				
	Leasing		Cash + Rate		Total	Leasing		Cash + Rate		Total
ALFA ROMEO	10	48%	11	52%	21	40	63%	24	38%	64
AUDI	50	66%	26	34%	76	195	63%	114	37%	309
BMW	60	82%	13	18%	73	234	77%	69	23%	303
CADILLAC	2	100%	0	0%	2	7	88%	1	13%	8
CHEVROLET	132	100%	0	0%	132	605	100%	1	0%	606
CHRYSLER	12	100%	0	0%	12	18	86%	3	14%	21
CITROEN	67	48%	72	52%	139	260	51%	248	49%	508
FIAT	10	100%	0	0%	10	326	54%	276	46%	336
FORD	2	100%	0	0%	2	736	73%	274	27%	1010
HONGKONG	4	100%	0	0%	4	-	-	-	-	28
SUBARU	27	93%	2	7%	29	106	98%	2	2%	108
SUZUKI	41	68%	19	32%	60	129	68%	61	32%	190
TOYOTA	135	70%	58	30%	193	568	70%	245	30%	813
VOLKSWAGEN	254	52%	238	48%	492	1088	51%	1062	49%	2150
VOLVO	31	65%	17	35%	48	112	64%	63	36%	175
TOTAL IMPORT	2753	58%	2031	42%	4784	11792	59%	8213	41%	20005
ARO	0	0%	14	100%	14	0	0%	89	100%	89
DACIA	623	14%	3856	86%	4479	2460	13%	16854	87%	19314
DAEWOO	-	0%	-	100%	-	-	-	-	-	-
TOTAL AUTOHTONE	623	8%	3870	92%	4493	2460	13%	16943	87%	19403

Com. < 3.5t+Minibus LCV < 3.5t+Minibus	Mai 2004 / May 2004					CUMULAT2004 / YTD2004				
	Leasing		Cash + Rate		Total	Leasing		Cash + Rate		Total
CITROEN	24	75%	8	25%	32	91	77%	27	23%	118
FIAT	49	49%	52	51%	101	253	57%	191	43%	444
FORD	71	80%	18	20%	89	343	79%	91	21%	434
GAZ	0	0%	0	0%	0	1	100%	0	0%	1
HYUNDAI	0	0%	1	100%	1	6	75%	2	25%	8
IVECO	0	0%	0	0%	0	231	77%	69	23%	299
MAZDA	31	86%	5	14%	36	0	90%	1	10%	37
MITSUBISHI	9	100%	0	0%	9	-	-	-	-	33
NISSAN	21	100%	0	0%	21	53	85%	9	15%	62
OPEL	6	75%	2	25%	8	34	54%	29	46%	63
PEUGEOT	39	38%	64	62%	103	189	41%	272	59%	461
RENAULT	58	75%	19	25%	77	257	66%	133	34%	390
SUZUKI	0	0%	0	0%	0	1	100%	0	0%	1
TOYOTA	5	71%	2	29%	7	40	91%	4	9%	44
VOLKSWAGEN	44	48%	48	52%	92	183	57%	136	43%	319
TOTAL IMPORT	437	65%	232	35%	669	1881	65%	1012	35%	2893
ARO	0	0%	13	100%	13	0	0%	30	100%	30
DACIA	254	14%	1573	86%	1827	961	13%	6582	87%	7543
DAEWOO	-	-	-	-	-	-	-	-	-	-
TOTAL AUTOHTONE	254	13%	1586	87%	1840	961	13%	6612	87%	7573