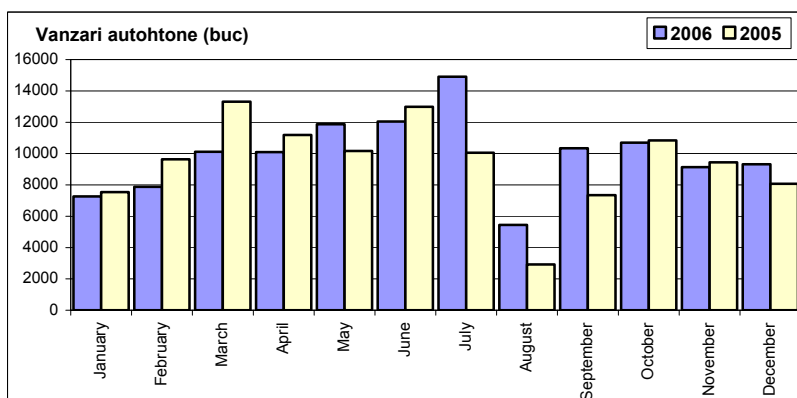


Top vânzări marci automobile - Decembrie 2006

| | Autoturisme | | | | Vehicule comerciale (inclusiv minibusuri și autobuze) | | | | Total | | | |
|--------------|---------------|----------------|---------------|---------------|--|---------------|--------------|--------------|---------------|----------------|---------------|---------------|
| | unitati | | cota piata | | < 3.5 t | | > 3.5 t | | unitati | | cota piata | |
| | Dec-06 | Cumul-06 | Dec-06 | Cumul-06 | Dec-06 | Cumul-06 | Dec-06 | Cumul-06 | Dec-06 | Cumul-06 | Dec-06 | Cumul-06 |
| DACIA | 7 859 | 96 037 | 33,9% | 37,5% | 763 | 11 740 | 0 | 0 | 8 622 | 107 777 | 31,4% | 36,3% |
| RENAULT | 2 243 | 21 395 | 9,7% | 8,3% | 222 | 2 105 | 0 | 0 | 2 465 | 23 500 | 9,0% | 7,9% |
| SKODA | 2 127 | 20 541 | 9,2% | 8,0% | 0 | 0 | 0 | 0 | 2 127 | 20 541 | 7,7% | 6,9% |
| VW | 1 311 | 15 004 | 5,7% | 5,9% | 300 | 2 103 | 29 | 215 | 1 640 | 17 322 | 6,0% | 5,8% |
| OPEL | 1 435 | 11 153 | 6,2% | 4,4% | 52 | 481 | 0 | 0 | 1 487 | 11 634 | 5,4% | 3,9% |
| DAEWOO | 1 461 | 23 075 | 6,3% | 9,0% | 3 | 111 | 0 | 0 | 1 464 | 23 186 | 5,3% | 7,8% |
| FORD | 958 | 9 417 | 4,1% | 3,7% | 327 | 3 397 | 0 | 30 | 1 285 | 12 844 | 4,7% | 4,3% |
| FIAT | 513 | 6 491 | 2,2% | 2,5% | 670 | 3 341 | 0 | 0 | 1 183 | 9 832 | 4,3% | 3,3% |
| CHEVROLET | 1 019 | 7 609 | 4,4% | 3,0% | 0 | 0 | 0 | 0 | 1 019 | 7 609 | 3,7% | 2,6% |
| PEUGEOT | 707 | 10 512 | 3,1% | 4,1% | 178 | 2 607 | 0 | 0 | 885 | 13 119 | 3,2% | 4,4% |
| TOYOTA | 720 | 5 707 | 3,1% | 2,2% | 6 | 445 | 0 | 0 | 726 | 6 152 | 2,6% | 2,1% |
| CITROEN | 445 | 3 471 | 1,9% | 1,4% | 82 | 723 | 0 | 0 | 527 | 4 194 | 1,9% | 1,4% |
| MERCEDES | 195 | 1 685 | 0,8% | 0,7% | 202 | 1 151 | 113 | 1 355 | 510 | 4 191 | 1,9% | 1,4% |
| SEAT | 447 | 3 864 | 1,9% | 1,5% | 0 | 0 | 0 | 0 | 447 | 3 864 | 1,6% | 1,3% |
| IVECO | 0 | 0 | 0,0% | 0,0% | 125 | 1 725 | 281 | 2 448 | 406 | 4 173 | 1,5% | 1,4% |
| HYUNDAI | 368 | 7 677 | 1,6% | 3,0% | 0 | 111 | 0 | 0 | 368 | 7 788 | 1,3% | 2,6% |
| NISSAN | 178 | 2 165 | 0,8% | 0,8% | 118 | 782 | 0 | 5 | 296 | 2 952 | 1,1% | 1,0% |
| BMW | 243 | 1 656 | 1,0% | 0,6% | 0 | 0 | 0 | 0 | 243 | 1 656 | 0,9% | 0,6% |
| KIA | 189 | 1 721 | 0,8% | 0,7% | 11 | 297 | 0 | 0 | 200 | 2 018 | 0,7% | 0,7% |
| DAF | 0 | 0 | 0,0% | 0,0% | 0 | 0 | 191 | 1 101 | 191 | 1 101 | 0,7% | 0,4% |
| Rest | 759 | 7 184 | 3,3% | 2,8% | 40 | 569 | 587 | 3 956 | 1 386 | 11 709 | 5,0% | 3,9% |
| TOTAL | 23 177 | 256 364 | 100,0% | 100,0% | 3 099 | 31 688 | 1 201 | 9 110 | 27 477 | 297 162 | 100,0% | 100,0% |

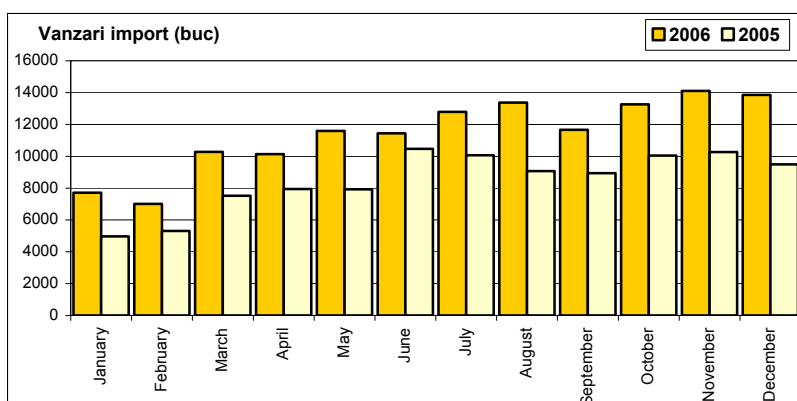
Vanzari autoturisme autohtone

| Luna/An | 2006 | 2005 | Variatie |
|--------------|----------------|----------------|-------------|
| January | 7 260 | 7 540 | -3,7% |
| February | 7 874 | 9 635 | -18,3% |
| March | 10 119 | 13 314 | -24,0% |
| April | 10 097 | 11 186 | -9,7% |
| May | 11 874 | 10 163 | 16,8% |
| June | 12 041 | 12 981 | -7,2% |
| July | 14 910 | 10 056 | 48,3% |
| August | 5 444 | 2 921 | 86,4% |
| September | 10 341 | 7 343 | 40,8% |
| October | 10 694 | 10 841 | -1,4% |
| November | 9 138 | 9 442 | -3,2% |
| December | 9 320 | 8 067 | 15,5% |
| Total | 119 112 | 113 489 | 5,0% |



Vanzari autoturisme import

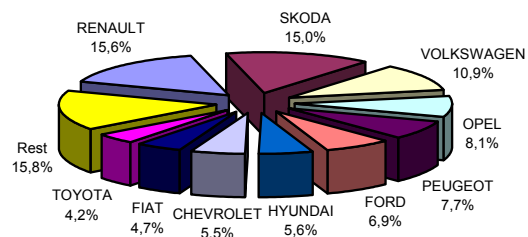
| Luna/An | 2006 | 2005 | Variatie |
|--------------|----------------|----------------|--------------|
| January | 7 713 | 4 971 | 55,2% |
| February | 7 013 | 5 310 | 32,1% |
| March | 10 281 | 7 526 | 36,6% |
| April | 10 142 | 7 947 | 27,6% |
| May | 11 595 | 7 929 | 46,2% |
| June | 11 447 | 10 471 | 9,3% |
| July | 12 788 | 10 065 | 27,1% |
| August | 13 373 | 9 071 | 47,4% |
| September | 11 666 | 8 938 | 30,5% |
| October | 13 263 | 10 048 | 32,0% |
| November | 14 114 | 10 269 | 37,4% |
| December | 13 857 | 9 498 | 45,9% |
| Total | 137 252 | 102 043 | 34,5% |



Top vanzari autoturisme import - marci

| MARCA | Decembrie | | Variație Nov. | | 12 luni 2006 | | Variație 2005 | |
|--------------|-----------|--------------|---------------|--------------|--------------|---------------|---------------|--------------|
| | poziție | valoare | poziție | procent | poziție | valoare | poziție | procent |
| RENAULT | 1 | 2243 | 1 | ↗ 18.4% | 1 | 21395 | 1 | ↘ -1.9% |
| SKODA | 2 | 2127 | 2 | ↗ 15.0% | 2 | 20541 | 2 | ↗ 38.7% |
| VOLKSWAGEN | 4 | 1311 | 3 | ↘ -20.7% | 3 | 15004 | 3 | ↗ 28.3% |
| OPEL | 3 | 1435 | 4 | ↗ 12.5% | 4 | 11153 | 5 | ↗ 106.9% |
| PEUGEOT | 8 | 707 | 5 | ↘ -33.5% | 5 | 10512 | 4 | ↗ 23.1% |
| FORD | 6 | 958 | 8 | ↗ 16.7% | 6 | 9417 | 6 | ↗ 75.9% |
| HYUNDAI | 12 | 368 | 9 | ↘ -54.5% | 7 | 7677 | 9 | ↗ 90.2% |
| CHEVROLET | 5 | 1019 | 7 | ↗ 24.0% | 8 | 7609 | 7 | ↗ 58.7% |
| FIAT | 9 | 513 | 6 | ↘ -40.1% | 9 | 6491 | 8 | ↗ 55.6% |
| TOYOTA | 7 | 720 | 10 | ↘ -2.4% | 10 | 5707 | 10 | ↗ 55.4% |
| Rest | | 2456 | | 5.3% | | 21746 | | 22.4% |
| TOTAL | | 13857 | | -1.8% | | 137252 | | 34.5% |

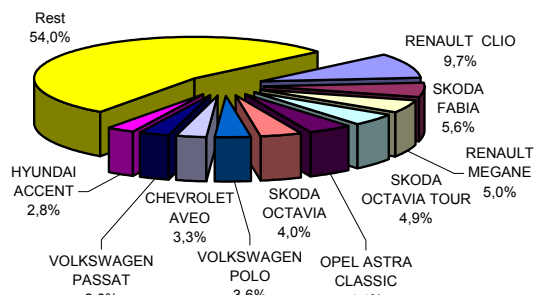
Autoturisme import - marci - Decembrie 2006



Top vanzari autoturisme import - modele

| MODEL | Decembrie | | Variație Nov. | | 12 luni 2006 | | Variație 2005 | |
|--------------------|-----------|--------------|---------------|--------------|--------------|---------------|---------------|--------------|
| | poziție | valoare | poziție | procent | poziție | valoare | poziție | procent |
| RENAULT CLIO | 1 | 1328 | 1 | ↗ 17.4% | 1 | 13249 | 1 | ↗ 7.8% |
| SKODA FABIA | 2 | 855 | 3 | ↗ 4.0% | 2 | 7629 | 5 | ↗ 75.5% |
| RENAULT MEGANE | 3 | 794 | 4 | ↗ 26.0% | 3 | 6882 | 2 | ↘ -15.6% |
| SKODA OCTAVIA TOUR | 6 | 617 | 7 | ↗ 25.4% | 4 | 6666 | 4 | ↗ 33.8% |
| OPEL ASTRA CLASSIC | 5 | 638 | 2 | ↘ -25.6% | 5 | 6103 | 15 | ↗ 214.3% |
| SKODA OCTAVIA | 7 | 556 | 8 | ↗ 20.9% | 6 | 5432 | 3 | ↗ 6.4% |
| VOLKSWAGEN POLO | 10 | 367 | 10 | ↘ -13.0% | 7 | 4977 | 11 | ↗ 121.9% |
| CHEVROLET AVEO | 4 | 739 | 5 | ↗ 20.9% | 8 | 4506 | - | - |
| VOLKSWAGEN PASSAT | 9 | 376 | 13 | ↗ 0.3% | 9 | 3899 | 7 | ↗ 11.1% |
| HYUNDAI ACCENT | 24 | 133 | 11 | ↘ -66.5% | 10 | 3832 | 16 | ↗ 111.1% |
| Rest | | 7454 | | -5.8% | | 74077 | | 28.5% |
| TOTAL | | 13857 | | -1.8% | | 137252 | | 34.5% |

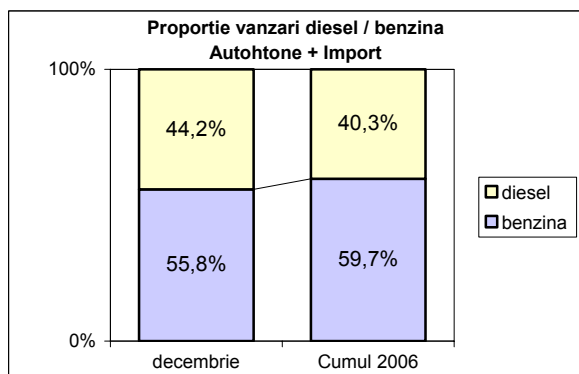
Autoturisme import - modele - Decembrie 2006



Vanzari autoturisme DIESEL

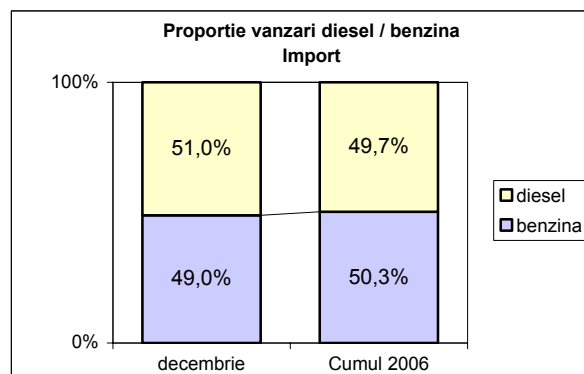
Autohtone + Import

| | benzina | | diesel | | total |
|------------|---------|-------|--------|-------|---------|
| decembrie | 12 936 | 55,8% | 10241 | 44,2% | 23 177 |
| Cumul 2006 | 153 147 | 59,7% | 103217 | 40,3% | 256 364 |



Import

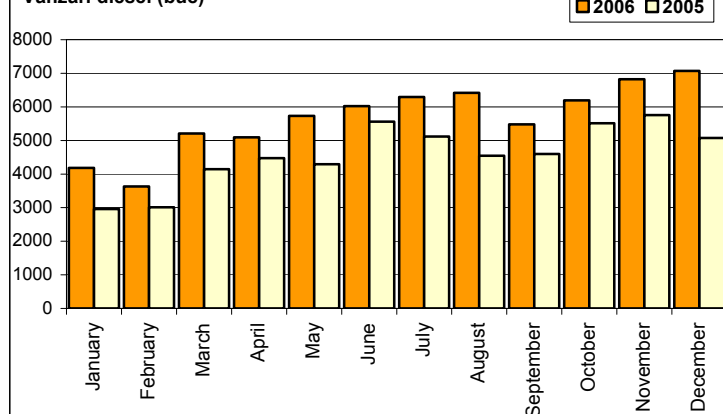
| | benzina | | diesel | | total |
|------------|---------|-------|--------|-------|---------|
| decembrie | 6 785 | 49,0% | 7072 | 51,0% | 13 857 |
| Cumul 2006 | 69 093 | 50,3% | 68159 | 49,7% | 137 252 |



Vanzari autoturisme DIESEL - import

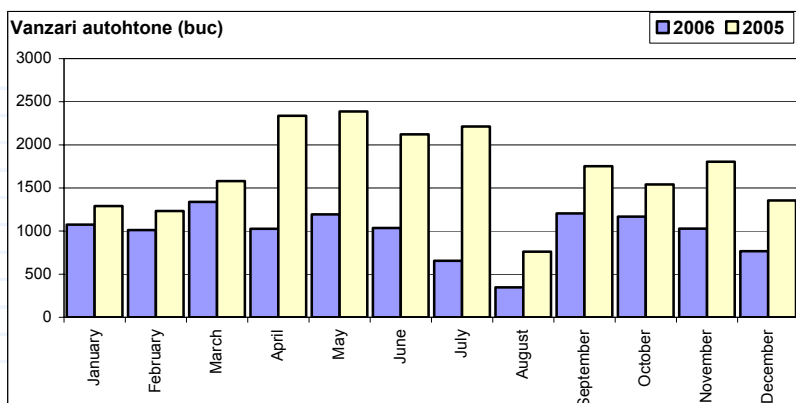
| Luna/An | 2006 | pondere diesel | 2005 | pondere diesel | Variatie 06/05 |
|--------------|---------------|----------------|---------------|----------------|----------------|
| January | 4 185 | 54,3% | 2 961 | 59,6% | 41,3% |
| February | 3 629 | 51,7% | 3 013 | 56,7% | 20,4% |
| March | 5 210 | 50,7% | 4 143 | 55,0% | 25,8% |
| April | 5 095 | 50,2% | 4 473 | 56,3% | 13,9% |
| May | 5 730 | 49,4% | 4 292 | 54,1% | 33,5% |
| June | 6 024 | 52,6% | 5 562 | 53,1% | 8,3% |
| July | 6 293 | 49,2% | 5 116 | 50,8% | 23,0% |
| August | 6 416 | 48,0% | 4 546 | 50,1% | 41,1% |
| September | 5 480 | 47,0% | 4 596 | 51,4% | 19,2% |
| October | 6 196 | 46,7% | 5 514 | 54,9% | 12,4% |
| November | 6 825 | 48,4% | 5 755 | 56,0% | 18,6% |
| December | 7 072 | 51,0% | 5 076 | 53,4% | 39,3% |
| Total | 68 155 | 49,7% | 55 047 | 53,9% | 23,8% |

Vanzari diesel (buc)



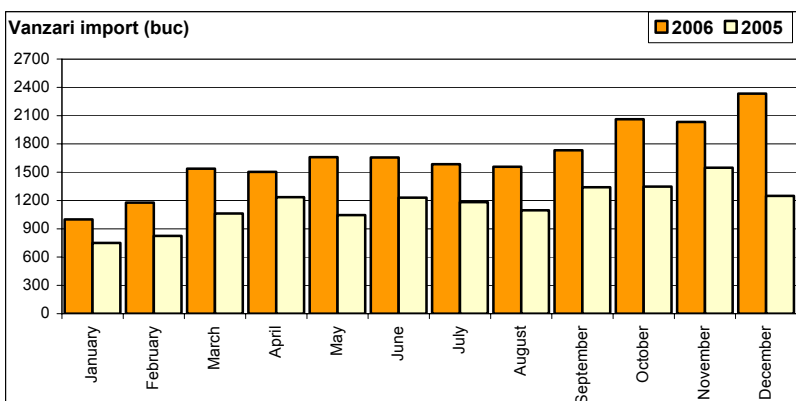
Vanzari comerciale usoare + minibus autohtone

| Luna/An | 2006 | 2005 | Variatie |
|--------------|---------------|---------------|---------------|
| January | 1 074 | 1 291 | -16,8% |
| February | 1 012 | 1 233 | -17,9% |
| March | 1 339 | 1 580 | -15,3% |
| April | 1 026 | 2 337 | -56,1% |
| May | 1 194 | 2 388 | -50,0% |
| June | 1 035 | 2 122 | -51,2% |
| July | 656 | 2 213 | -70,4% |
| August | 348 | 761 | -54,3% |
| September | 1 205 | 1 752 | -31,2% |
| October | 1 167 | 1 540 | -24,2% |
| November | 1 029 | 1 804 | -43,0% |
| December | 766 | 1 355 | -43,5% |
| Total | 11 851 | 20 376 | -41,8% |



Vanzari comerciale usoare + minibus import

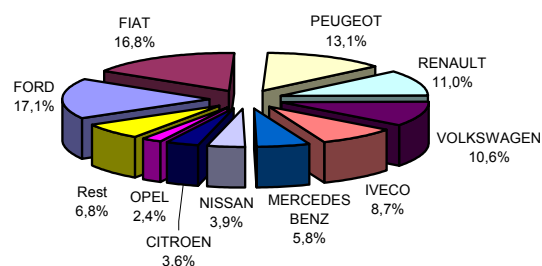
| Luna/An | 2006 | 2005 | Variatie |
|--------------|---------------|---------------|--------------|
| January | 999 | 750 | 33,2% |
| February | 1 178 | 824 | 43,0% |
| March | 1 538 | 1 063 | 44,7% |
| April | 1 503 | 1 235 | 21,7% |
| May | 1 659 | 1 045 | 58,8% |
| June | 1 656 | 1 230 | 34,6% |
| July | 1 585 | 1 183 | 34,0% |
| August | 1 558 | 1 096 | 42,2% |
| September | 1 733 | 1 340 | 29,3% |
| October | 2 062 | 1 347 | 53,1% |
| November | 2 033 | 1 547 | 31,4% |
| December | 2 333 | 1 249 | 86,8% |
| Total | 19 837 | 13 909 | 42,6% |



Vanzari comerciale <3.5t si minibus import - marci

| MARCA | Decembrie | | Variație Nov. | | 12 luni 2006 | | Variație 2005 | |
|---------------|-----------|-------------|---------------|--------------|--------------|--------------|---------------|--------------|
| | poziție | valoare | poziție | procent | poziție | valoare | poziție | procent |
| FORD | 2 | 327 | 1 | 0,0% | 1 | 3397 | 1 | ↗ 45,0% |
| FIAT | 1 | 670 | 2 | ↗ 122,6% | 2 | 3341 | 2 | ↗ 44,9% |
| PEUGEOT | 6 | 178 | 5 | ↘ -17,6% | 3 | 2607 | 3 | ↗ 26,6% |
| RENAULT | 4 | 224 | 6 | ↗ 31,0% | 4 | 2173 | 4 | ↗ 6,3% |
| VOLKSWAGEN | 3 | 300 | 4 | ↗ 17,2% | 5 | 2103 | 5 | ↗ 43,3% |
| IVECO | 7 | 125 | 3 | ↘ -53,7% | 6 | 1725 | 6 | ↗ 115,1% |
| MERCEDES BENZ | 5 | 202 | 7 | ↗ 36,5% | 7 | 1151 | 7 | ↗ 52,2% |
| NISSAN | 8 | 118 | 9 | ↗ 40,5% | 8 | 782 | 10 | ↗ 154,7% |
| CITROEN | 9 | 82 | 8 | ↘ -3,5% | 9 | 723 | 8 | ↗ 21,5% |
| OPEL | 10 | 52 | 12 | ↗ 62,5% | 10 | 481 | 9 | ↗ 5,7% |
| Rest | | 55 | | -61,5% | | 1354 | | ↗ 74,9% |
| TOTAL | | 2333 | | 14,8% | | 19837 | | 42,6% |

Vanzari com <3.5t si minibus import - marci - 12 luni 2006



Vanzari comerciale <3.5t si minibus import - modele

| MODEL | Decembrie | | Variație Nov. | | 12 luni 2006 | | Variație 2005 | |
|---------------------|-----------|-------------|---------------|--------------|--------------|--------------|---------------|--------------|
| | poziție | valoare | poziție | procent | poziție | valoare | poziție | procent |
| FORD TRANSIT | 2 | 262 | 1 | ↘ -14,7% | 1 | 2860 | 1 | ↗ 53,3% |
| FIAT DOBLO CARGO | 3 | 227 | 3 | ↗ 3,2% | 2 | 1826 | 2 | ↗ 63,2% |
| PEUGEOT BOXER | 9 | 102 | 4 | ↘ -23,3% | 3 | 1593 | 4 | ↗ 52,0% |
| IVECO DAILY | 10 | 94 | 2 | ↘ -58,4% | 4 | 1510 | 6 | ↗ 90,7% |
| FIAT DUCATO | 5 | 143 | 8 | ↗ 76,5% | 5 | 1196 | 3 | ↗ 7,5% |
| RENAULT MASTER | 7 | 119 | 10 | ↗ 67,6% | 6 | 1090 | 5 | ↗ 5,7% |
| MERCEDES BENZ SPRIN | 4 | 166 | 5 | ↗ 35,0% | 7 | 903 | 8 | ↗ 52,0% |
| RENAULT KANGOO EXPF | 11 | 93 | 7 | ↗ 5,7% | 8 | 738 | 7 | ↗ 5,6% |
| PEUGEOT PARTNER | 19 | 31 | 13 | ↘ -39,2% | 9 | 679 | 9 | ↗ 19,3% |
| VOLKSWAGEN CADDY | 6 | 137 | 6 | ↗ 28,0% | 10 | 677 | 10 | ↗ 51,1% |
| Rest | | 959 | | 53,2% | | 6765 | | ↗ 46,1% |
| TOTAL | | 2333 | | 14,8% | | 19837 | | 42,6% |

Vanzari com <3.5t si minibus - modele - 12 luni 2006

