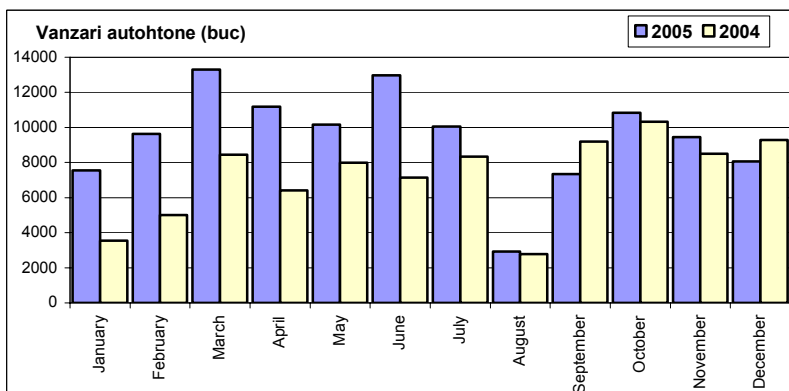


Top vânzări marci automobile - 2005

	Autoturisme		Vehicule comerciale (inclusiv minibusuri și autobuze)		Total	
	unitati	pondere	unitati	unitati	unitati	pondere
DACIA	93 084	43.2%	20 192	0	113 276	44.2%
RENAULT	21 820	10.1%	2 045	609	24 474	9.5%
DAEWOO	20 380	9.5%	148	0	20 528	8.0%
SKODA	14 806	6.9%	0	0	14 806	5.8%
VW	11 693	5.4%	1 468	168	13 329	5.2%
PEUGEOT	8 541	4.0%	2 059	0	10 600	4.1%
FORD	5 354	2.5%	2 342	53	7 749	3.0%
FIAT	4 172	1.9%	2 306	0	6 478	2.5%
OPEL	5 391	2.5%	455	0	5 846	2.3%
CHEVROLET	4 795	2.2%	0	0	4 795	1.9%
HYUNDAI	4 036	1.9%	15	0	4 051	1.6%
TOYOTA	3 673	1.7%	240	0	3 913	1.5%
CITROEN	2 916	1.4%	595	0	3 511	1.4%
MERCEDES	1 235	0.6%	756	1 265	3 256	1.3%
SEAT	2 927	1.4%	0	0	2 927	1.1%
IVECO	0	0.0%	802	1 932	2 734	1.1%
NISSAN	1 820	0.8%	307	2	2 129	0.8%
BMW	1 386	0.6%	0	0	1 386	0.5%
AUDI	1 300	0.6%	0	0	1 300	0.5%
MITSUBISHI	1 028	0.5%	223	1	1 252	0.5%
Rest	5 175	2.4%	332	2 567	8 074	3.1%
TOTAL	215 532	100.0%	34 285	6 597	256 414	100.0%

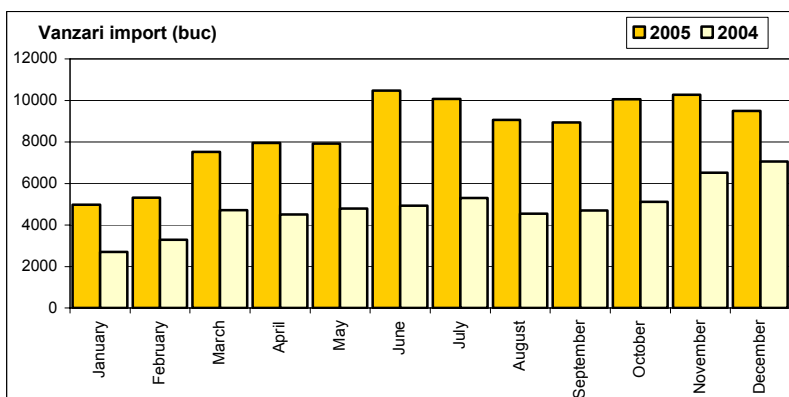
Vanzari autoturisme autohtone

Luna/An	2005	2004	Variatie
January	7 540	3 537	113.2%
February	9 635	5 013	92.2%
March	13 314	8 441	57.7%
April	11 186	6 412	74.5%
May	10 163	7 989	27.2%
June	12 981	7 139	81.8%
July	10 056	8 338	20.6%
August	2 921	2 774	5.3%
September	7 343	9 194	-20.1%
October	10 841	10 321	5.0%
November	9 442	8 507	11.0%
December	8 067	9 290	-13.2%
Total	113 489	86 955	30.5%



Vanzari autoturisme import

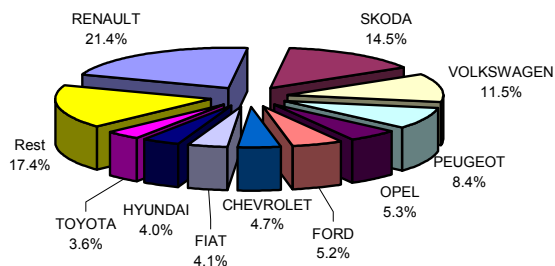
Luna/An	2005	2004	Variatie
January	4 971	2 701	84.0%
February	5 310	3 297	61.1%
March	7 526	4 709	59.8%
April	7 947	4 505	76.4%
May	7 929	4 782	65.8%
June	10 471	4 931	112.4%
July	10 065	5 301	89.9%
August	9 071	4 544	99.6%
September	8 938	4 699	90.2%
October	10 048	5 110	96.6%
November	10 269	6 517	57.6%
December	9 498	7 055	34.6%
Total	102 043	58 151	75.5%



Top vanzari autoturisme import - marci

MARCA	12 luni 2005		Variație 2004	
	poziție	valoare	poziție	procent
RENAULT	1	21820	1 ↗	102.0%
SKODA	2	14806	2 ↗	95.6%
VOLKSWAGEN	3	11693	4 ↗	82.1%
PEUGEOT	4	8541	3 ↗	22.0%
OPEL	5	5391	6 ↗	72.7%
FORD	6	5354	5 ↗	59.6%
CHEVROLET	7	4795	9 ↗	133.7%
FIAT	8	4172	7 ↗	83.4%
HYUNDAI	9	4036	10 ↗	102.5%
TOYOTA	10	3673	8 ↗	68.8%
Rest		17762		56.0%
TOTAL		102043		75.5%

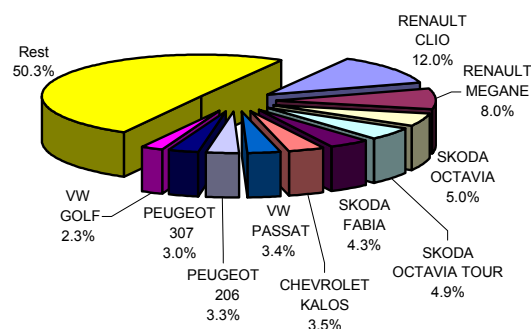
Autoturisme import - marci - 12 luni 2005



Top vanzari autoturisme import - modele

MODEL	12 luni 2005		Variație 2004	
	poziție	valoare	poziție	procent
RENAULT CLIO	1	12287	2 ↗	160.4%
RENAULT MEGANE	2	8154	1 ↗	65.0%
SKODA OCTAVIA	3	5106	20 ↗	717.0%
SKODA OCTAVIA TOUR	4	4983	3 ↗	31.8%
SKODA FABIA	5	4348	4 ↗	55.5%
CHEVROLET KALOS	6	3590	8 ↗	95.4%
VW PASSAT	7	3508	9 ↗	151.6%
PEUGEOT 206	8	3374	5 ↗	21.0%
PEUGEOT 307	9	3098	6 ↗	20.4%
VW GOLF	10	2306	7 ↗	20.5%
Rest		51289		66.6%
TOTAL		102043		75.5%

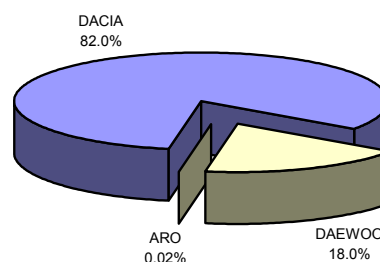
Autoturisme import - modele - 12 luni 2005



Top vanzari autoturisme autohtone - marci

MARCA	12 luni 2005		Variație 2004	
	poziție	valoare	poziție	procent
DACIA	1	93084	1 ↗	55.7%
DAEWOO	2	20380	2 ↘	-24.6%
ARO	3	25	3 ↘	-82.4%
TOTAL		113489		30.5%

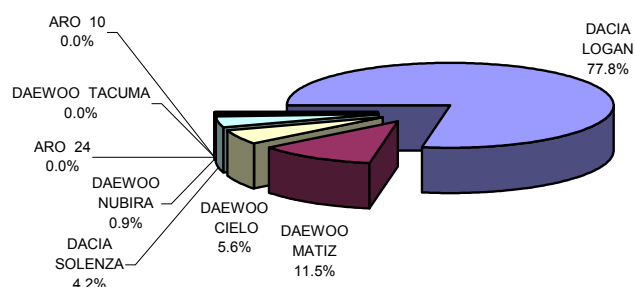
Autoturisme autohtone - marci - 12 luni 2005



Top vanzari autoturisme autohtone - modele

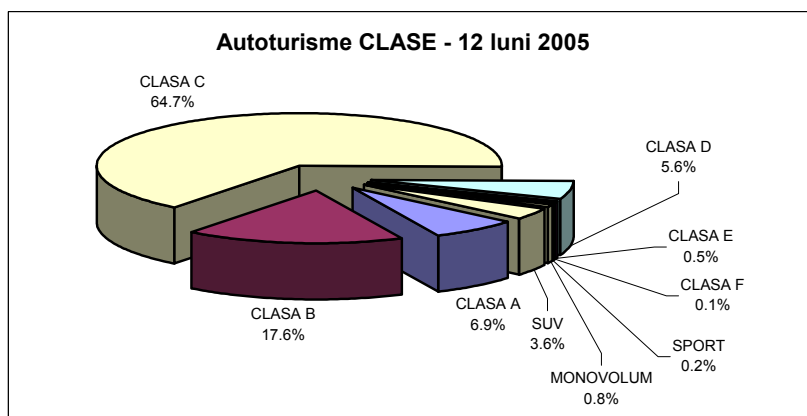
MODEL	12 luni 2005		Variație 2004	
	poziție	valoare	poziție	procent
DACIA LOGAN	1	88275	2 ↗	335.4%
DAEWOO MATIZ	2	13087	3 ↘	-35.3%
DAEWOO CIELO	3	6302	5 ↗	19.0%
DACIA SOLENZA	4	4809	1 ↘	-84.7%
DAEWOO NUBIRA	5	981	6 ↘	-33.9%
ARO 24	6	15	7 ↘	-87.4%
DAEWOO TACUMA	7	10	8 ↘	-79.6%
ARO 10	8	10	9 ↘	-56.5%
Rest		0		-100.0%
TOTAL		113489		30.5%

Autoturisme autohtone - modele - 12 luni 2005



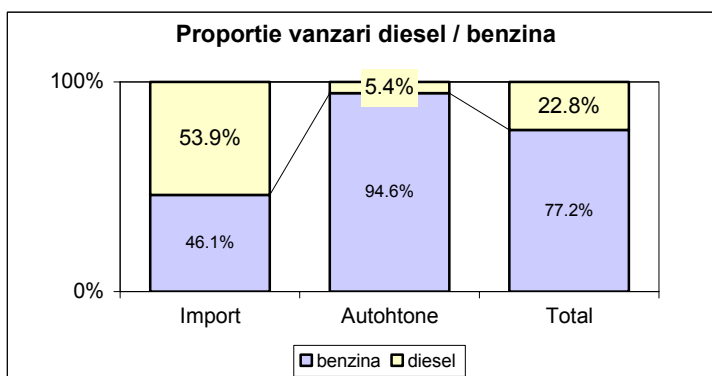
Vanzari autoturisme pe clase

MARCA	Unitati	Pondere	Variatie
CLASA A	14945	6.9%	↘ -28.8%
CLASA B	37851	17.6%	↗ 99.8%
CLASA C	139379	64.7%	↗ 60.1%
CLASA D	12115	5.6%	↗ 19.4%
CLASA E	1177	0.5%	↗ 24.9%
CLASA F	253	0.1%	↗ 35.3%
SPORT	372	0.2%	↗ 28.3%
MONOVOLUM	1690	0.8%	↘ -1.1%
SUV	7750	3.6%	↗ 60.5%
TOTAL	215532	100.0%	48.5%



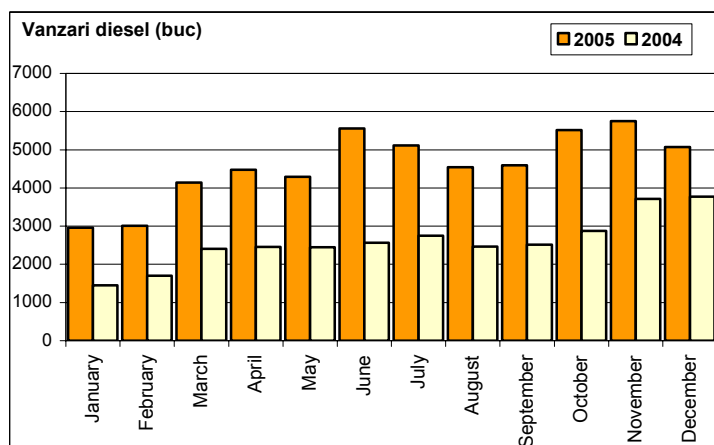
Vanzari autoturisme pe tip combustibil

	benzina	diesel	total
Import	46 996 46.1%	55047 53.9%	102 043
Autohtone	107 339 94.6%	6150 5.4%	113 489
Total	84 099 77.2%	24888 22.8%	108 987



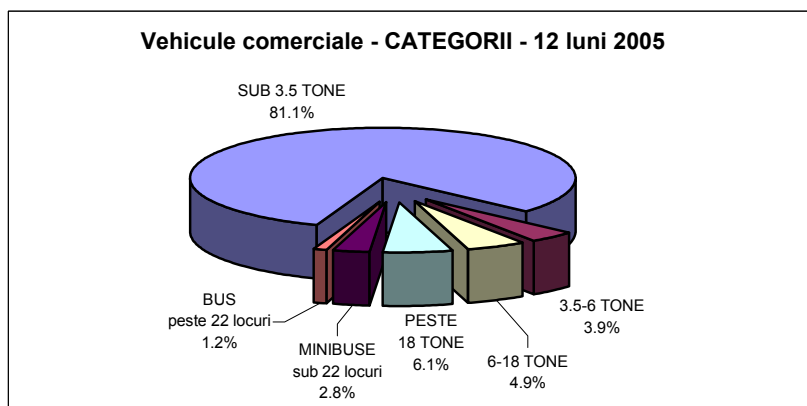
Vanzari autoturisme DIESEL - import

Luna/An	2005	pondere diesel	2004	pondere diesel	Variatie 05/04
January	2 961	59.6%	1 447	53.6%	104.6%
February	3 013	56.7%	1 704	51.7%	76.8%
March	4 143	55.0%	2 402	51.0%	72.5%
April	4 473	56.3%	2 455	54.5%	82.2%
May	4 292	54.1%	2 446	51.1%	75.5%
June	5 562	53.1%	2 568	52.1%	116.6%
July	5 116	50.8%	2 752	51.9%	85.9%
August	4 546	50.1%	2 467	54.3%	84.3%
September	4 596	51.4%	2 511	53.4%	83.0%
October	5 514	54.9%	2 874	56.2%	91.9%
November	5 755	56.0%	3 712	56.9%	55.0%
December	5 076	53.4%	3 770	53.4%	34.6%
Total	55 047	53.9%	31 108	53.5%	77.0%



Vanzari vehicule comerciale

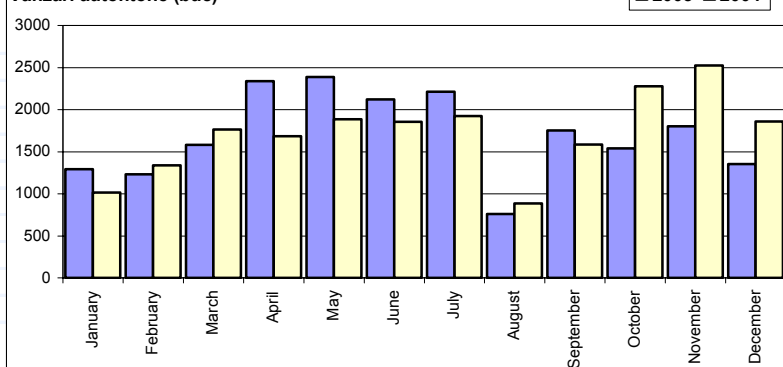
MARCA	Unitati	Pondere	Variatie
SUB 3.5 TONE	33140	81.1%	↗ 15.1%
3.5-6 TONE	1590	3.9%	↗ 13.4%
6-18 TONE	2014	4.9%	↗ 6.2%
PESTE 18 TONE	2491	6.1%	↘ -2.0%
MINIBUSE sub 22 locuri	1145	2.8%	↗ 36.5%
BUS peste 22 locuri	502	1.2%	↗ 39.8%
TOTAL	40882	100.0%	27.8%



Vanzari comerciale usoare + minibusse autohtone

Luna/An	2005	2004	Variatie
January	1 291	1 015	27.2%
February	1 233	1 340	-8.0%
March	1 580	1 766	-10.5%
April	2 337	1 685	38.7%
May	2 388	1 887	26.6%
June	2 122	1 855	14.4%
July	2 213	1 923	15.1%
August	761	885	-14.0%
September	1 752	1 587	10.4%
October	1 540	2 276	-32.3%
November	1 804	2 523	-28.5%
December	1 355	1 858	-27.1%
Total	20 376	20 600	-1.1%

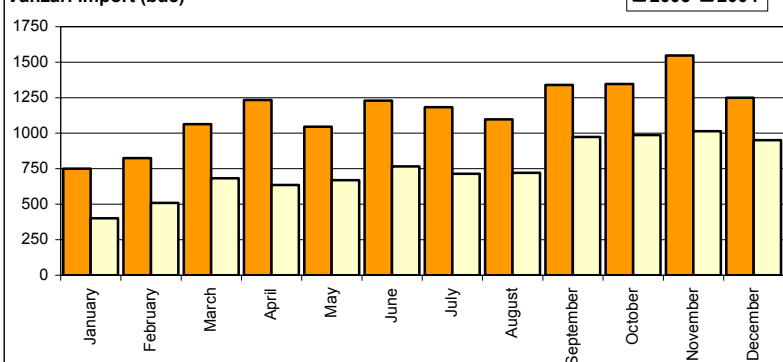
Vanzari autohtone (buc)



Vanzari comerciale usoare + minibusse import

Luna/An	2005	2004	Variatie
January	750	400	87.5%
February	824	509	61.9%
March	1 063	683	55.6%
April	1 235	635	94.5%
May	1 045	670	56.0%
June	1 230	765	60.8%
July	1 183	714	65.7%
August	1 096	721	52.0%
September	1 340	972	37.9%
October	1 347	987	36.5%
November	1 547	1 014	52.6%
December	1 249	951	31.3%
Total	13 909	9 021	54.2%

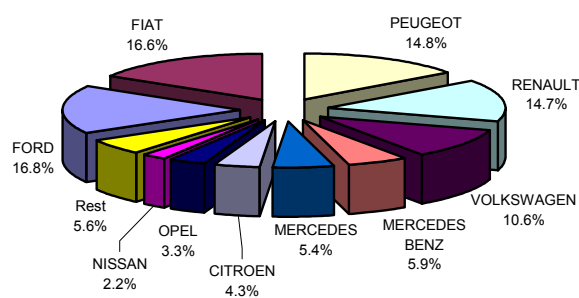
Vanzari import (buc)



Vanzari comerciale <3.5t si minibusse import - marci

MARCA	12 luni 2005		Variatie 2004	
	pozitie	valoare	pozitie	procent
FORD	1	2342	3 ↗	79.7%
FIAT	2	2306	1 ↗	46.8%
PEUGEOT	3	2059	2 ↗	56.2%
RENAULT	4	2045	4 ↗	56.9%
VOLKSWAGEN	5	1468	5 ↗	46.5%
IVECO	6	802	6 ↗	26.7%
MERCEDES	7	756	7 ↗	36.0%
CITROEN	8	595	8 ↗	64.4%
OPEL	9	455	10 ↗	125.2%
NISSAN	10	307	9 ↗	4.8%
Rest		774		61.9%
TOTAL		13909		54.2%

Vanzari com <3.5t si minibusse import - marci - 12 luni 2005



Vanzari comerciale <3.5t si minibusse import - modele

MODEL	12 luni 2005		Variatie 2004	
	pozitie	valoare	pozitie	procent
FORD TRANSIT	1	1880	1 ↗	72.8%
FIAT DUCATO	2	1132	2 ↗	36.1%
FIAT DOBLO CARGO	3	1119	4 ↗	52.2%
RENAULT MASTER	4	1095	5 ↗	64.4%
PEUGEOT BOXER	5	1085	3 ↗	42.6%
IVECO DAILY	6	802	6 ↗	26.7%
RENAULT KANGOO EXPRESS	7	699	7 ↗	40.9%
MERCEDES SPRINTER	8	596	8 ↗	40.6%
PEUGEOT PARTNER	9	569	9 ↗	38.1%
VW TRANSPORTER	10	541	10 ↗	36.3%
Rest		4391		70.4%
TOTAL		13909		54.2%

Vanzari com <3.5t si minibusse - modele - 12 luni 2005

