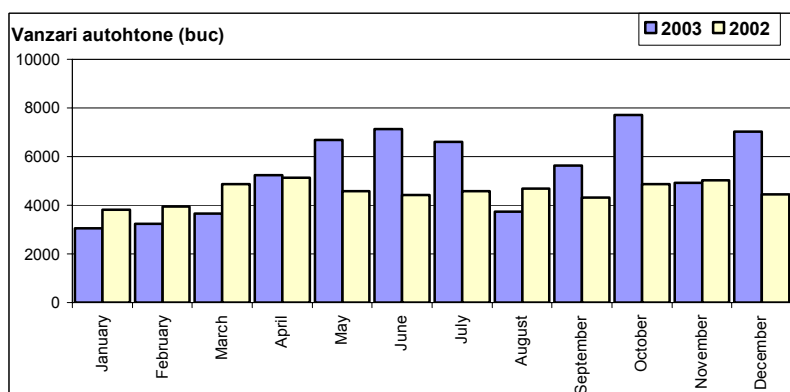


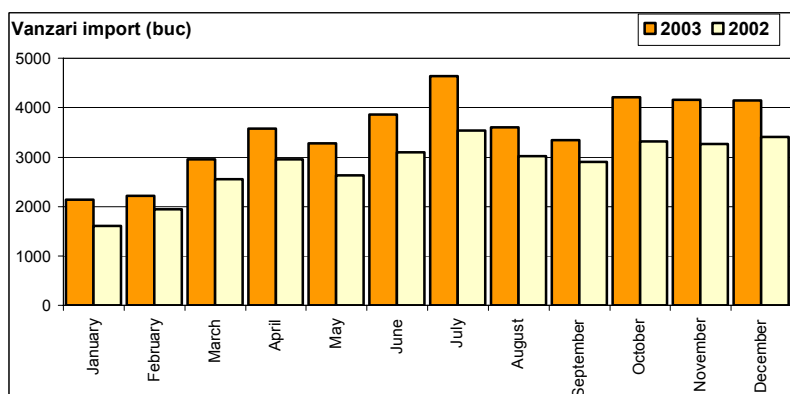
Vanzari autoturisme autohtone

Luna/An	2003	2002	Variatie
January	3 049	3 799	-19.7%
February	3 231	3 928	-17.7%
March	3 657	4 858	-24.7%
April	5 214	5 110	2.0%
May	6 682	4 567	46.3%
June	7 138	4 408	61.9%
July	6 603	4 575	44.3%
August	3 731	4 680	-20.3%
September	5 653	4 304	31.3%
October	7 711	4 854	58.9%
November	4 913	5 001	-1.8%
December	7 036	4 443	58.4%
Total	64 618	54 527	18.5%



Vanzari autoturisme import in 2003

Luna/An	2003	2002	Variatie
January	2 149	1 618	32.8%
February	2 221	1 948	14.0%
March	2 960	2 556	15.8%
April	3 578	2 957	21.0%
May	3 276	2 642	24.0%
June	3 861	3 101	24.5%
July	4 638	3 537	31.1%
August	3 600	3 017	19.3%
September	3 346	2 912	14.9%
October	4 208	3 315	26.9%
November	4 164	3 268	27.4%
December	4 144	3 406	21.7%
Total	42 145	34 277	23.0%

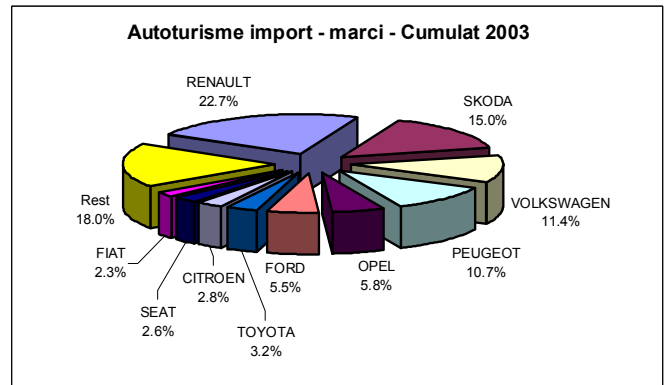


Top vânzări marci automobile - Decembrie 2003

	Autoturisme				Vehicule comerciale (inclusiv minibusuri si autobuze)				Total			
	nr. buc.		cota piata		< 3.5 t		> 3.5 t		nr. buc.		cota piata	
	Decembrie	2003	Decembrie	2003	Decembrie	2003	Decembrie	2003	Decembrie	2003	Decembrie	2003
DACIA	3 745	41 001	33.5%	38.4%	1 353	16 873	0	0	5 098	57 874	37.4%	42.8%
DAEWOO	3 245	23 138	29.0%	21.7%	21	311	0	0	3 266	23 449	24.0%	17.3%
RENAULT	1 024	9 564	9.2%	9.0%	54	553	8	276	1 086	10 393	8.0%	7.7%
SKODA	522	6 340	4.7%	5.9%	0	0	0	0	522	6 340	3.8%	4.7%
VW	353	4 818	3.2%	4.5%	69	1 036	0	0	422	5 854	3.1%	4.3%
PEUGEOT	382	4 511	3.4%	4.2%	133	992	0	0	515	5 503	3.8%	4.1%
FORD	300	2 307	2.7%	2.2%	78	872	2	93	380	3 272	2.8%	2.4%
OPEL	267	2 425	2.4%	2.3%	7	42	0	0	274	2 467	2.0%	1.8%
FIAT	108	983	1.0%	0.9%	95	1 392	0	0	203	2 375	1.5%	1.8%
MERCEDES	95	845	0.8%	0.8%	32	384	109	1 128	236	2 357	1.7%	1.7%
IVECO	0	0	0.0%	0.0%	0	2	241	2 085	241	2 087	1.8%	1.5%
CITROEN	119	1 174	1.1%	1.1%	36	311	0	0	155	1 485	1.1%	1.1%
TOYOTA	101	1 355	0.9%	1.3%	4	98	0	0	105	1 453	0.8%	1.1%
SEAT	107	1 095	1.0%	1.0%	2	188	0	0	109	1 283	0.8%	0.9%
NISSAN	83	847	0.7%	0.8%	3	131	0	4	86	982	0.6%	0.7%
HYUNDAI	129	909	1.2%	0.9%	3	23	0	0	132	932	1.0%	0.7%
VOLVO	53	320	0.5%	0.3%	0	0	22	547	75	867	0.6%	0.6%
AUDI	77	791	0.7%	0.7%	0	0	0	0	77	791	0.6%	0.6%
ARO	46	480	0.4%	0.4%	16	205	0	0	62	685	0.5%	0.5%
SUZUKI	30	582	0.3%	0.5%	0	0	0	0	30	582	0.2%	0.4%
Rest	394	3 278	3.5%	3.1%	22	183	127	813	543	4 274	4.0%	3.2%
TOTAL	11 180	106 763	100.0%	100.0%	1 928	23 596	509	4 946	13 617	135 305	100.0%	100.0%

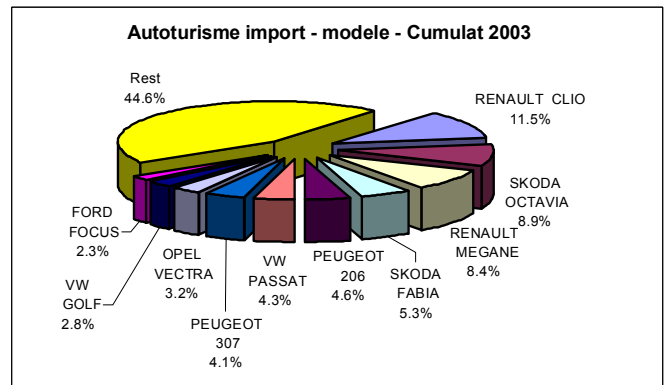
Top vanzari autoturisme import - marci

MARCA	Decembrie		Variație Noiembrie		12 luni 2003		Variație 2002	
	poziție	valoare	poziție	procent	poziție	valoare	poziție	procent
RENAULT	1	1024	1	↗ 17.2%	1	9564	1	↗ 13.6%
SKODA	2	522	2	↘ -2.8%	2	6340	2	↗ 35.1%
VOLKSWAGEN	4	353	3	↘ -17.9%	3	4818	3	↗ 5.0%
PEUGEOT	3	382	4	↘ -9.7%	4	4511	4	↗ 28.4%
OPEL	6	267	6	↗ 16.6%	5	2425	5	↗ 37.3%
FORD	5	300	5	↗ 17.2%	6	2307	6	↗ 59.3%
TOYOTA	11	101	7	↘ -42.6%	7	1355	15	↗ 123.6%
CITROEN	8	119	10	- 0.0%	8	1174	8	↗ 24.9%
SEAT	10	107	9	↘ -16.4%	9	1095	9	↗ 40.2%
FIAT	9	108	8	↘ -26.0%	10	983	7	↘ -6.4%
Rest		861		1.8%		7573		17.0%
TOTAL		4144		-0.5%		42145		23.0%



Top vanzari autoturisme import - modele

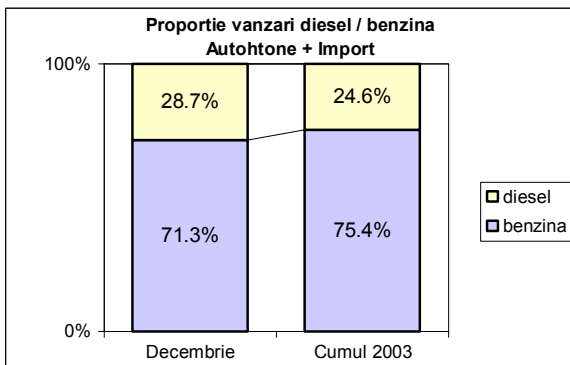
MARCA	Decembrie		Variație Noiembrie		12 luni 2003		Variație 2002	
	poziție	valoare	poziție	procent	poziție	valoare	poziție	procent
RENAULT CLIO	1	496	1	↗ 13.2%	1	4832	1	↗ 16.2%
SKODA OCTAVIA	3	292	3	↘ -11.3%	2	3759	3	↗ 63.0%
RENAULT MEGANE	2	408	2	↗ 13.7%	3	3558	2	↗ 19.4%
SKODA FABIA	4	191	5	↗ 7.3%	4	2250	4	↗ 3.3%
PEUGEOT 206	5	151	4	↘ -16.6%	5	1938	6	↗ 33.9%
VW PASSAT	10	80	7	↘ -42.5%	6	1801	5	↘ -6.3%
PEUGEOT 307	8	140	6	↘ -3.5%	7	1716	7	↗ 23.5%
OPEL VECTRA	7	144	8	↗ 7.5%	8	1329	16	↗ 223.4%
VW GOLF	9	110	10	↗ 3.8%	9	1187	8	↘ -3.0%
FORD FOCUS	6	151	9	↗ 28.0%	10	965	9	↗ 10.3%
Rest		1981		-2.7%		18810		22.3%
TOTAL		4144		-0.5%		42145		23.0%



Vanzari autoturisme DIESEL

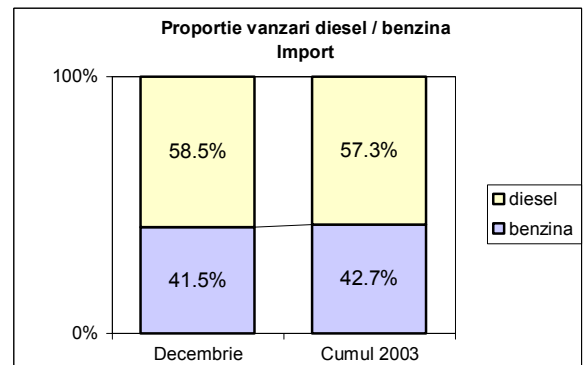
Autohtone + Import

	benzina		diesel		total
Decembrie	7 973	71.3%	3207	28.7%	11 180
Cumul 2003	80 540	75.4%	26223	24.6%	106 763



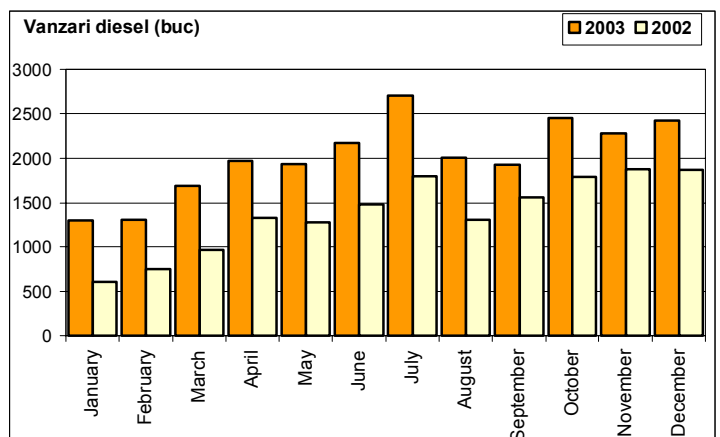
Import

	benzina		diesel		total
Decembrie	1 720	41.5%	2424	58.5%	4 144
Cumul 2003	17 978	42.7%	24167	57.3%	42 145



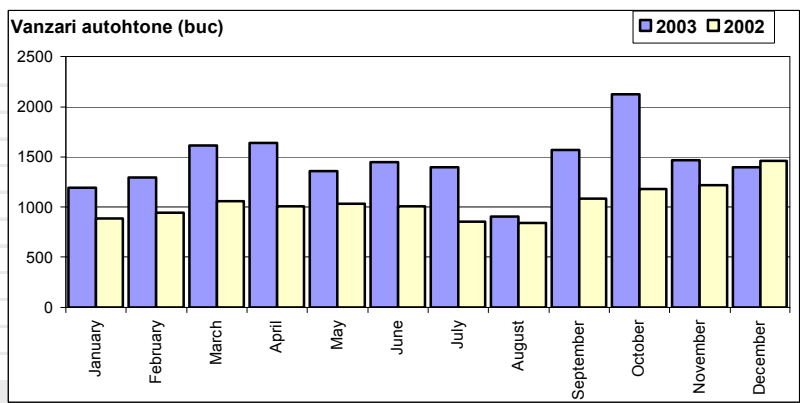
Vanzari autoturisme DIESEL - import

Luna/An	2003	pondere diesel	2002	pondere diesel	Variatie 2003/2002
January	1 299	60.4%	609	37.6%	113.3%
February	1 309	58.9%	752	38.6%	74.1%
March	1 684	56.9%	969	37.9%	73.8%
April	1 968	55.0%	1 325	44.8%	48.5%
May	1 935	59.1%	1 279	48.4%	51.3%
June	2 177	56.4%	1 479	47.7%	47.2%
July	2 704	58.3%	1 791	50.6%	51.0%
August	2 007	55.8%	1 306	43.3%	53.7%
September	1 929	57.7%	1 563	53.7%	23.4%
October	2 449	58.2%	1 787	53.9%	37.0%
November	2 282	54.8%	1 876	57.4%	21.6%
December	2 424	58.5%	1 873	55.0%	29.4%
Total	24 167	57.3%	16 609	48.5%	45.5%



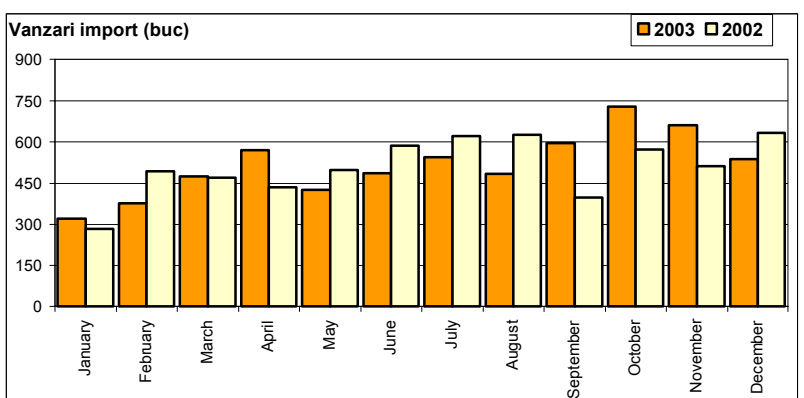
Vanzari comerciale usoare + minibus autohtone

Luna/An	2003	2002	Variatie
January	1 190	883	34.8%
February	1 291	941	37.2%
March	1 614	1 059	52.4%
April	1 640	1 007	62.9%
May	1 355	1 032	31.3%
June	1 451	1 003	44.7%
July	1 391	851	63.5%
August	905	838	8.0%
September	1 572	1 079	45.7%
October	2 127	1 174	81.2%
November	1 468	1 214	20.9%
December	1 390	1 462	-4.9%
Total	17 394	12 543	38.7%



Vanzari comerciale usoare + minibus import

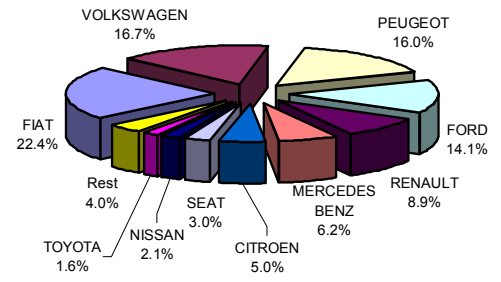
Luna/An	2003	2002	Variatie
January	322	284	13.4%
February	377	492	-23.4%
March	475	469	1.3%
April	569	435	30.8%
May	426	497	-14.3%
June	485	585	-17.1%
July	544	620	-12.3%
August	483	626	-22.8%
September	595	398	49.5%
October	728	571	27.5%
November	660	511	29.2%
December	538	632	-14.9%
Total	6 202	6 120	1.3%



Vanzari comerciale <3.5t si minibus import - marci

MARCA	Decembrie		Variatie Noiembrie		12 luni 2003		Variatie 2002	
	pozitie	valoare	pozitie	procent	pozitie	valoare	pozitie	procent
FIAT	2	95	2	↘ -23.4%	1	1392	2	↗ 26.9%
VOLKSWAGEN	4	69	1	↘ -52.4%	2	1036	1	↘ -14.5%
PEUGEOT	1	133	3	↗ 35.7%	3	992	4	↗ 30.9%
FORD	3	78	4	↗ 4.0%	4	872	5	↗ 23.0%
RENAULT	5	54	5	↘ -14.3%	5	553	6	↘ -17.8%
MERCEDES BENZ	7	32	6	↘ -22.0%	6	384	3	↘ -58.6%
CITROEN	6	36	8	↗ 16.1%	7	311	7	↗ 56.3%
SEAT	14	2	7	↘ -94.4%	8	188	8	↗ 18.2%
NISSAN	12	3	10	↘ -72.7%	9	131	14	↗ 367.9%
TOYOTA	11	4	9	↘ -71.4%	10	98	12	↗ 104.2%
Rest		32		45.5%		245		-21.0%
TOTAL		538		-18.5%		6202		1.3%

Vanzari com <3.5t si minibus import - marci - Cumulat 2003



Vanzari comerciale <3.5t si minibus import - modele

MODEL	Decembrie		Variatie Noiembrie		12 luni 2003		Variatie 2002	
	pozitie	valoare	pozitie	procent	pozitie	valoare	pozitie	procent
FORD TRANSIT	2	70	3	↗ 18.6%	1	762	1	↗ 7.5%
FIAT DUCATO	3	49	1	↘ -26.9%	2	752	3	↗ 14.5%
FIAT DOBLO CARGO	5	46	4	↘ -19.3%	3	639	6	↗ 45.2%
PEUGEOT BOXER	1	79	2	↗ 31.7%	4	566	8	↗ 35.4%
VW TRANSPORTER	6	38	7	↘ -7.3%	5	448	2	↘ -34.4%
PEUGEOT PARTNER	4	49	11	↗ 104.2%	6	343	10	↗ 15.1%
VW LT	7	28	5	↘ -49.1%	7	336	9	↗ 5.3%
RENAULT KANGOO	9	23	10	↘ -32.4%	8	304	4	↘ -43.9%
MERCEDES SPRINTER	10	23	8	↘ -37.8%	9	297	5	↘ -39.1%
VW CADDY	21	3	6	↘ -93.9%	10	252	11	↗ 20.6%
Rest		130		-26.6%		1503		10.8%
TOTAL		538		-18.5%		6202		1.3%

Vanzari com <3.5t si minibus - modele - Cumulat 2003

